

PARTS CATALOGUE

LNS125 (2PH1) INDONESIA

LNS125 (2PH2) INDONESIA

LNS125
PARTS CATALOGUE
©2014 by Yamaha Motor Co., Ltd.
1st edition, November 2014
All rights reserved.
Any reprinting or unauthorized use
without the written permission of
Yamaha Motor Co., Ltd.
is expressly prohibited.
Printed in Japan.

FOREWORD

This Parts Catalogue is related to the parts for the model(s) on the cover page. When you are ordering replacement parts, please refer to this Parts Catalogue and quote both part numbers and part names correctly.

1. Modifications or additions which have been made after the issue of the Parts Catalogue will be announced in the Parts News.
It is advisable that you make the necessary corrections to the Parts Catalogue according to the Parts News.

2. Abbreviations

The following abbreviations are used in this Parts Catalogue.

“UR” Use specified parts number.

“UN” Use as many as needed.

“AP” Alternate Parts

“LM” Locally Made (Parts need to be ordered locally)

“F#” Frame No. (Applicable machine No.)

“O/S” Over Size

3. The number of components for assembly

- Parts, which are to be supplied in an assembly, are listed with a dot (.) in front of the part name as shown below.
- The numeral appearing to the right of each component part indicates the quantity of parts for each assembly unit.

PART NO.	DESCRIPTION	Q'TY	REMARKS
2F5-83310-60	FRONT FLASHER LIGHT ASSY	2	
115-83311-60	.BULB (6V-18W)	1	

4. Applicable colours of graphics are represented in the “REMARKS” as shown below.

PART NO.	DESCRIPTION	Q'TY	REMARKS
2N4-24110-00-X5	FUEL TANK COMP.	2	MXR
3J1-24240-10	.GRAPHIC, FUEL TANK	1	FOR MXR

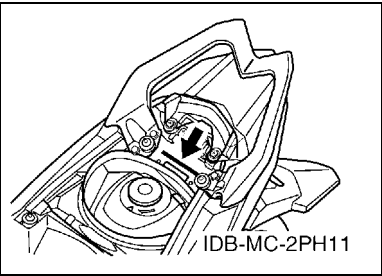
5. Note that the illustrations for reference in finding parts numbers are not to be used for assembling. When assembling, please use the applicable service manual.

6. The asterisk (*) before a reference number indicates modified items after the first edition.

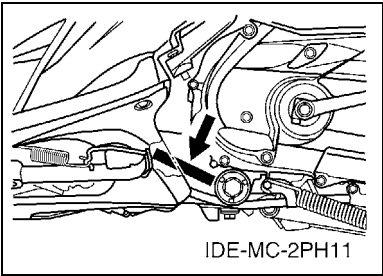
FOREWORD

7. Applicable Serial No.

Frame Serial No.



Engine Serial No.



8. Applicable Colour Code (The (*) mark shows Model colour.)

Abbreviation	Colour Name	Colour Code
BMJ(*)	BROWN METALLIC J	1338
DBNM8	DARK BLUISH GRAY METALLIC 8	0919
DRMK(*)	DEEP RED METALLIC K	0918
RM7(*)	RED METALLIC 7	1218
SL	SILVER	0035
SMX(*)	BLACK METALLIC X	0903
VPRM2(*)	VIVID PURPLISH RED METALLIC 2	1339
WM6(*)	WHITE METALLIC 6	1124
YB	YAMAHA BLACK	0033
YM6(*)	YELLOW METALLIC 6	1440

9. Applicable Starting Serial No.

Frame Serial No.

Serial No.	Name Of Q'ty Column	Model Code

Engine Serial No.

Serial No.	Name Of Q'ty Column	Model Code

CONTENTS

ENGINE

CYLINDER	1
CRANKSHAFT & PISTON	2
VALVE	3
CAMSHAFT & CHAIN	4
AIR SHROUD & FAN	5
OIL PUMP	6
INTAKE	7
EXHAUST	9
CRANKCASE	10
CRANKCASE COVER 1	12
STARTER	13
CLUTCH	14
TRANSMISSION	16

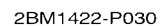
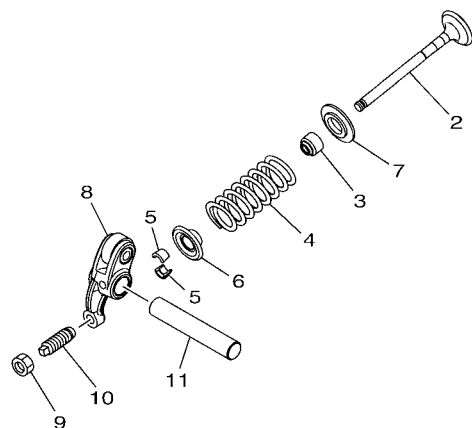
CHASSIS

FRAME	17
FENDER	18
SIDE COVER	19
REAR ARM & SUSPENSION	22
STEERING	23
FUEL TANK	25
SEAT	26
FRONT WHEEL FOR CAST WHEEL	27
FRONT WHEEL FOR SPOKE WHEEL	28
FRONT BRAKE CALIPER	29
REAR WHEEL FOR CAST WHEEL	30
REAR WHEEL FOR SPOKE WHEEL	31
STEERING HANDLE & CABLE	32
FRONT MASTER CYLINDER	34
STAND & FOOTREST	35
LEG SHIELD	37
GENERATOR	40
STARTING MOTOR	41
METER	42
HEADLIGHT	43
TAILLIGHT	44
HANDLE SWITCH & LEVER	45
ELECTRICAL 1	46
ELECTRICAL 2	47

INDEX

NUMERICAL INDEX	48
-----------------------	----



[illegible]

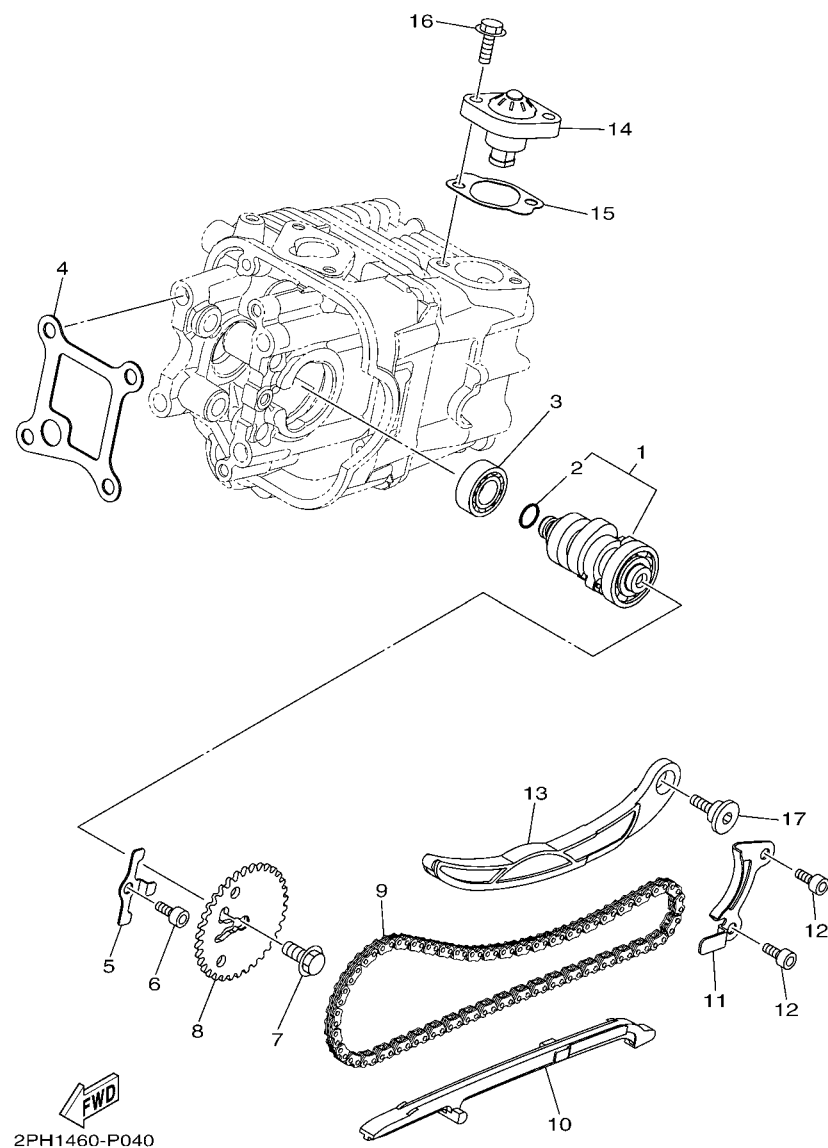


FIG. 4 CAMSHAFT & CHAIN

REF. NO.	PART NO.	DESCRIPTION	2PH1	2PH2			REMARKS
1	2PH-E2170-00	CAMSHAFT ASSY 1	1	1			
2	93210-09806	.O-RING	1	1			
3	93306-001X9	BEARING	1	1			
4	2PH-E111F-00	PLATE	1	1			
5	2PH-E112F-00	PLATE 2	1	1			
6	91312-06012	BOLT	1	1			
7	90105-07801	BOLT, FLANGE	1	1			
8	2PH-E2176-00	SPROCKET, CAM CHAIN	1	1			
9	94568-A6092	CHAIN	1	1			
10	54P-E2231-00	GUIDE, STOPPER 1	1	1			
11	44D-E2233-00	PLATE, GUIDE STOPPER 1	1	1			
12	91312-06012	BOLT	2	2			
13	2PH-E2241-00	GUIDE, STOPPER 2	1	1			
14	2BM-E2210-00	TENSIONER ASSY, CAM CHAIN	1	1			
15	2PH-E2213-00	GASKET, TENSIONER CASE	1	1			
16	95022-06020	BOLT, FLANGE	2	2			
17	54P-E2228-00	BOLT	1	1			

[illegible]

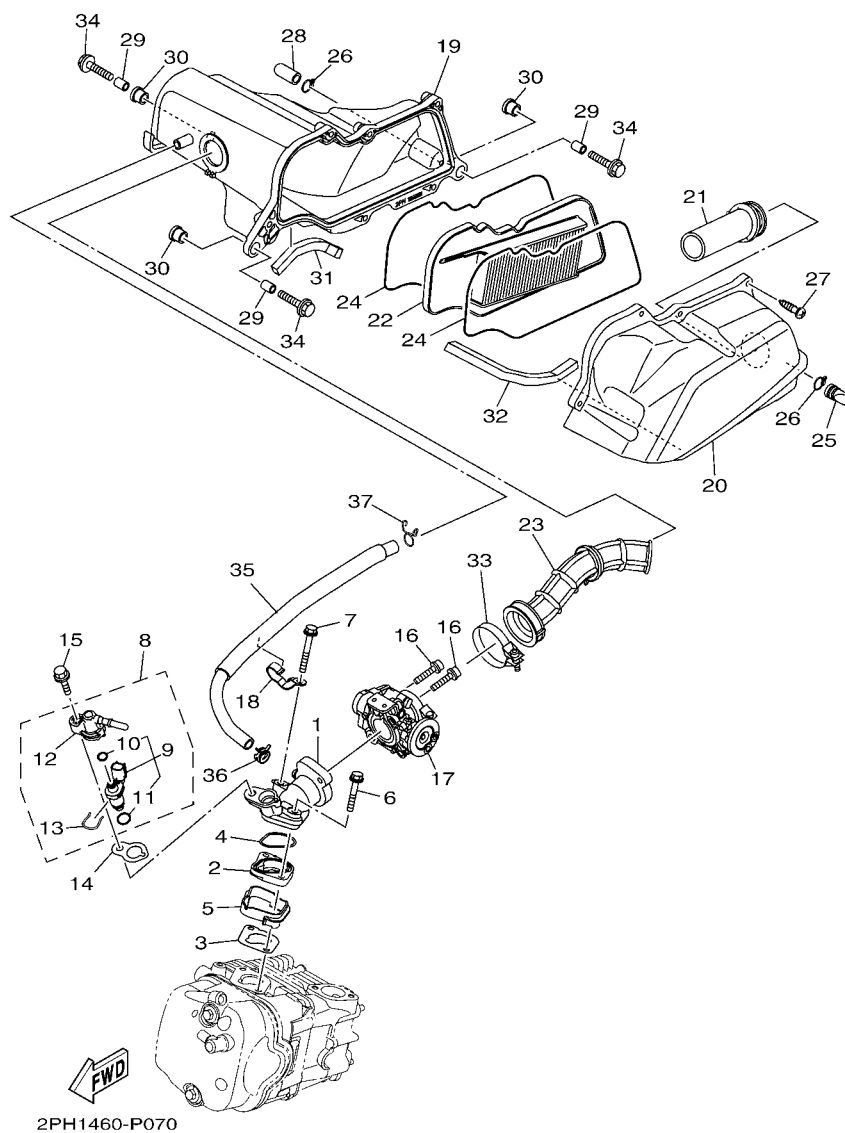


FIG. 7 INTAKE

REF. NO.	PART NO.	DESCRIPTION	2PH1	2PH2			REMARKS
1	2PH-E3585-00	MANIFOLD	1	1			
2	2PH-E3595-00	JOINT	1	1			
3	2PH-E3556-00	GASKET, MANIFOLD	1	1			
4	93210-35895	O-RING	1	1			
5	2PH-E3593-00	DAMPER	1	1			
6	95812-06035	BOLT, FLANGE	1	1			
7	95812-06045	BOLT, FLANGE	1	1			
8	2PH-E3770-00	INJECTOR ASSY	1	1			
9	2PH-E3761-00	.INJECTOR	1	1			
10	54P-E4147-00	..O-RING	1	1			
11	5CA-E4147-00	..O-RING	1	1			
12	54P-E3938-00	.PIPE	1	1			
13	54P-E4137-00	.CLIP	1	1			
14	2PH-E3557-00	GASKET	1	1			
15	95812-06025	BOLT, FLANGE	1	1			
16	90110-06846	BOLT, HEXAGON SOCKET HEAD	2	2			
17	2PH-E3750-00	THROTTLE BODY ASSY	1	1			
18	2PH-E4146-00	PLATE	1	1			
19	2PH-E4411-00	CASE, AIR CLEANER 1	1	1			
20	2PH-E4412-00	CAP, CLEANER CASE 1	1	1			
21	2PH-E4437-00	DUCT	1	1			
22	2PH-E4450-00	ELEMENT ASSY, AIR CLEANER	1	1			
23	2PH-E4453-00	JOINT, AIR CLEANER 1	1	1			
24	2PH-E4452-00	SEAL	2	2			
25	5TP-E443G-00	PIPE, DRAIN 2	1	1			
26	90467-12807	CLIP	2	2			
27	97707-50025	SCREW, TAPPING	6	6			

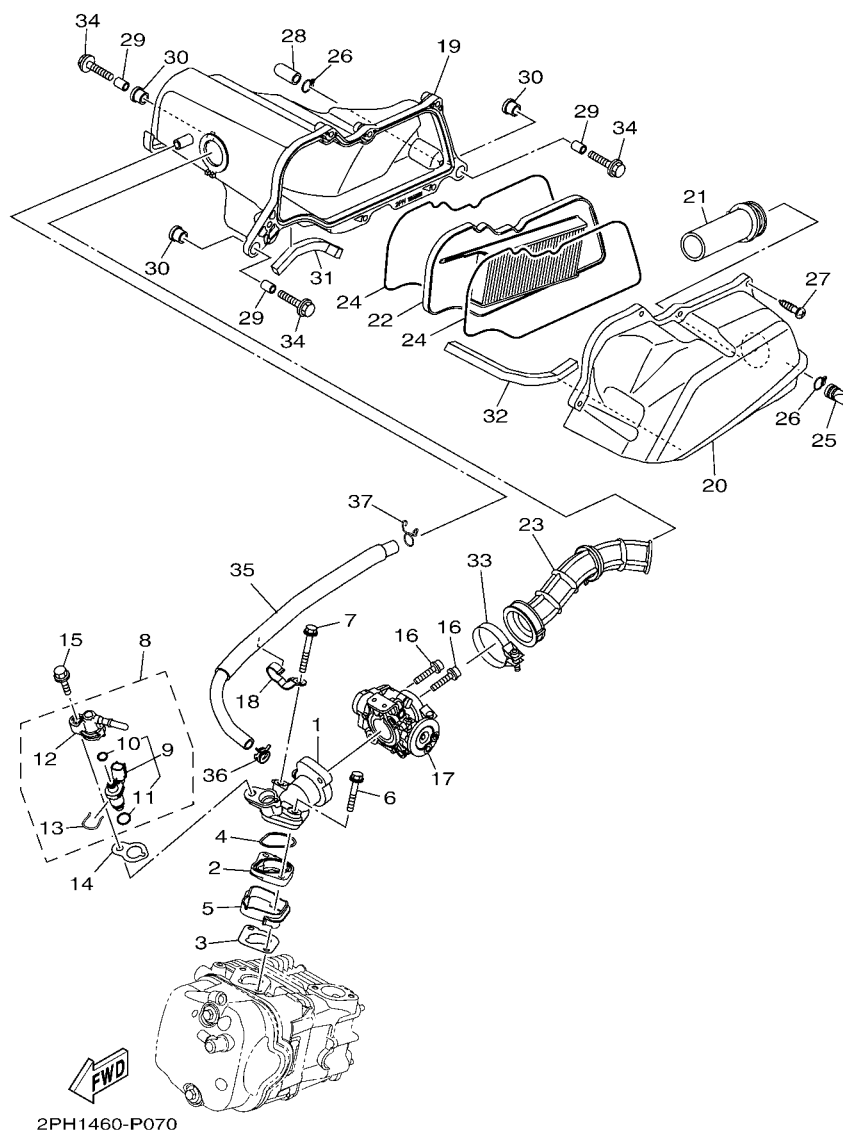


FIG. 7 INTAKE

[illegible]



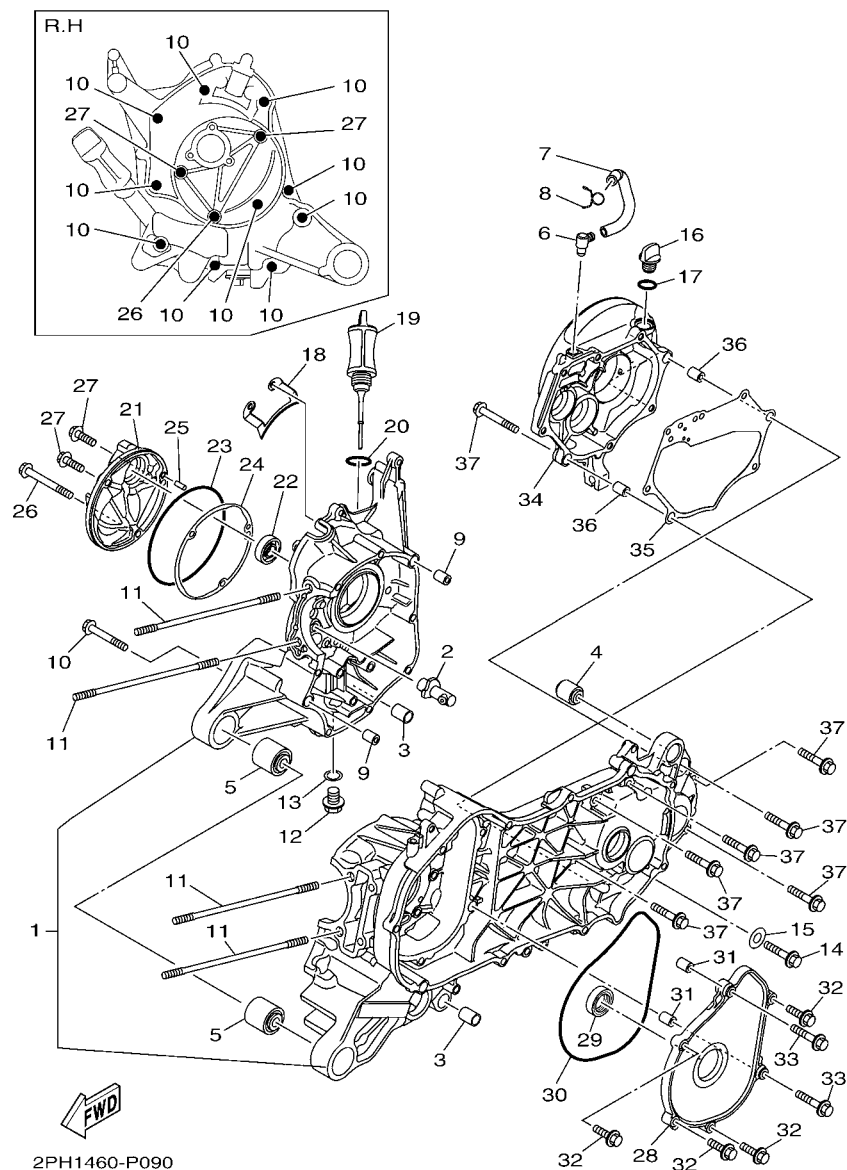


FIG. 9 CRANKCASE

REF. NO.	PART NO.	DESCRIPTION	2PH1	2PH2			REMARKS
1	2PH-E5150-00	CRANKCASE ASSY	1	1			
2	2PH-E5155-00	NOZZLE 3	1	1			
3	54P-F7121-00	BUSH	2	2			
4	5MX-F2216-00	BUSH, REAR SHOCK ABSORBER	1	1			
5	90388-10805	DAMPER	2	2			
6	54P-E5371-00	BREATHER	1	1			
7	2PH-E5373-00	PIPE, BREATHER	1	1			
8	90467-11825	CLIP	1	1			
9	91810-14809	PIN, DOWEL	2	2			
10	95022-06060	BOLT, FLANGE	10	10			
11	90116-08843	BOLT, STUD	4	4			
12	90340-12808	PLUG, STRAIGHT SCREW	1	1			
13	4YS-E1198-00	GASKET	1	1			
14	95812-06040	BOLT, FLANGE	1	1			
15	90430-06014	GASKET	1	1			
16	5LW-E5363-00	PLUG, OIL	1	1			
17	93210-148H8	O-RING	1	1			
18	2PH-E5113-00	PLATE	1	1			
19	2PH-E5362-00	PLUG, OIL LEVEL	1	1			
20	5LW-E3769-00	O-RING	1	1			
21	2PH-E5417-00	COVER, CAP	1	1			
22	93102-19814	OIL SEAL	1	1			
23	93211-07800	O-RING	1	1			
24	2PH-E5453-00	GASKET	1	1			
25	99480-05010	PIN	1	1			
26	95022-06070	BOLT, FLANGE	1	1			
27	95022-06020	BOLT, FLANGE	2	2			

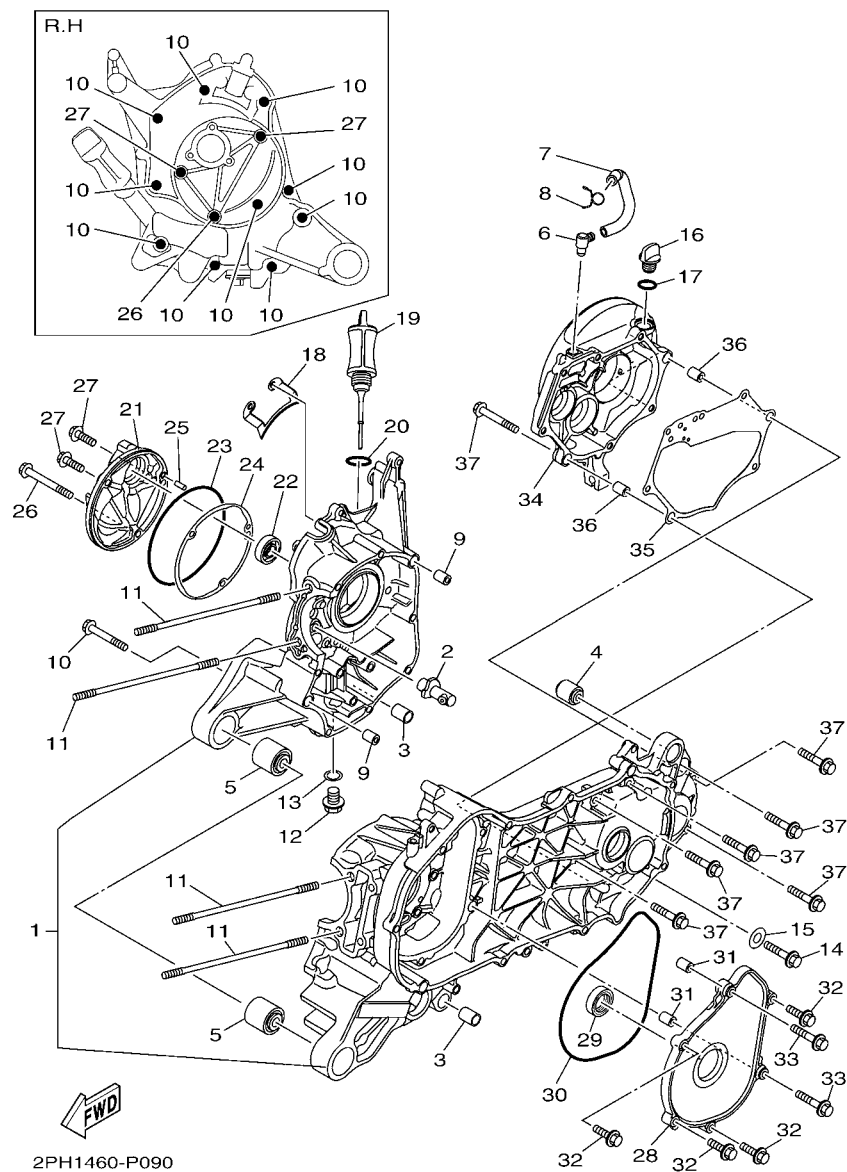


FIG. 9 CRANKCASE

[illegible]

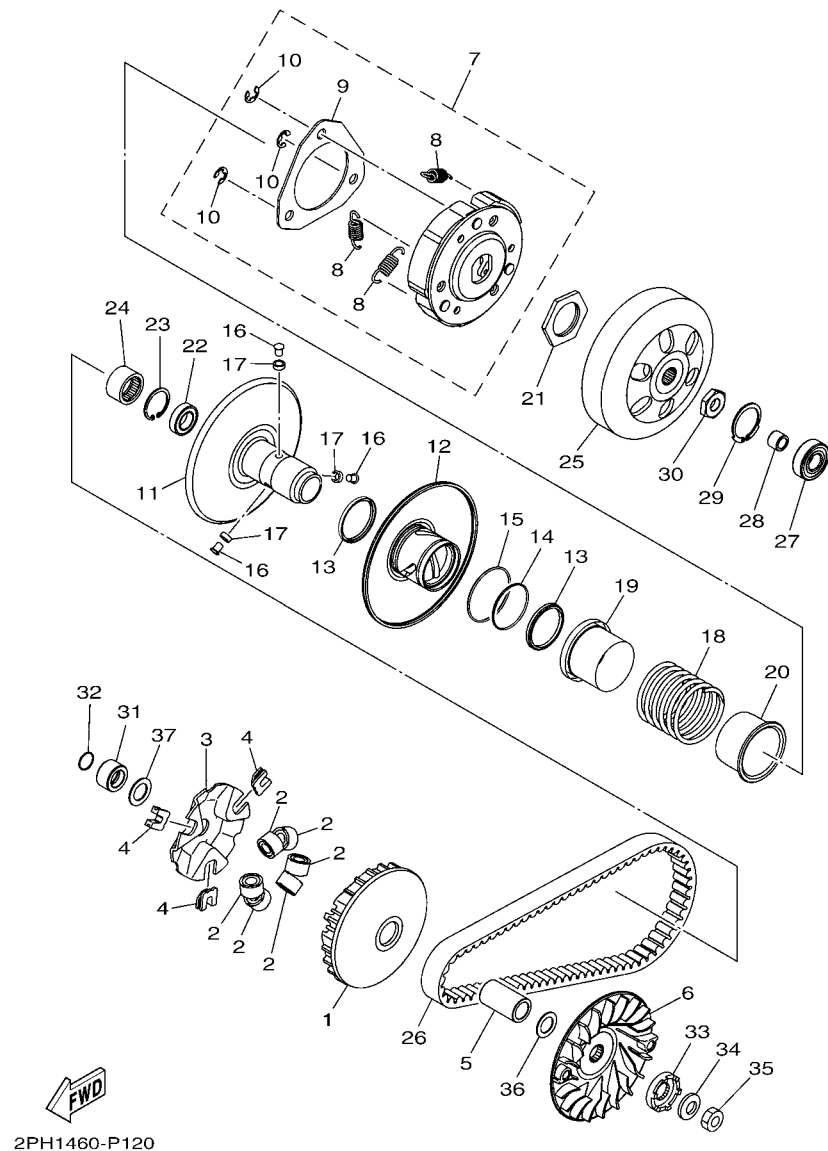


FIG. 12 CLUTCH

REF. NO.	PART NO.	DESCRIPTION	2PH1	2PH2			REMARKS
1	2SX-E7620-00	PRIMARY SLIDING SHEAVE COMP.	1	1			
2	2PH-E7632-10	WEIGHT	6	6			
3	2SX-E7623-00	CAM	1	1			
4	2SX-E7653-00	SLIDER	3	3			
5	54P-E7674-00	COLLAR, GUIDE	1	1			
6	44D-E7611-00	SHEAVE, PRIMARY FIXED	1	1			
7	2SX-E6620-00	CLUTCH CARRIER ASSY	1	1			
8	2SX-E6626-00	.SPRING, CLUTCH WEIGHT 1	3	3			
9	2DP-E6523-00	.PLATE, WEIGHT THRUST	1	1			
10	54P-E6819-00	.CIRCLIP, CLUTCH	3	3			
11	2SX-E7660-00	SECONDARY FIXED SHEAVE COMP.	1	1			
12	2SX-E7670-00	SECONDARY SLIDING SHEAVE	1	1			
13	2SX-E7465-00	SEAL	2	2			
14	2SX-E7465-10	SEAL	1	1			
15	2SX-E7465-20	SEAL	1	1			
16	2DP-E7664-00	PIN, GUIDE	3	3			
17	2DP-E7674-10	COLLAR, GUIDE	3	3			
18	2SX-E7683-00	SPRING, SECONDARY	1	1			
19	2SX-E7684-00	SEAT, SECONDARY SPRING	1	1			
20	2SX-E7644-00	SEAT,SPRING	1	1			
21	2DP-E7668-00	NUT	1	1			
22	2DP-E7678-00	BEARING	1	1			
23	2DP-E5744-00	CIRCLIP	1	1			
24	2DP-E7678-10	BEARING	1	1			
25	2SX-E6611-00	CLUTCH HOUSING COMP.	1	1			
26	2PH-E7641-00	V-BELT	1	1			
27	93306-252YB	BEARING	1	1			



REF. NO.	PART NO.	DESCRIPTION	2PH1	2PH2			REMARKS
1	2PH-E7410-00	MAIN AXLE COMP. (12T/50T)	1	1			UR
	2PH-E7410-10	MAIN AXLE COMP. (12T/50T)	1	1			UR
2	93306-351Y5	BEARING	2	2			
3	2PH-E7421-00	AXLE, DRIVE	1	1			UR
	2PH-E7421-10	AXLE, DRIVE	1	1			UR
4	2PH-E7211-00	GEAR, 1ST WHEEL (39T)	1	1			UR
	2PH-E7211-10	GEAR, 1ST WHEEL (39T)	1	1			UR
5	93306-272YA	BEARING	1	1			
6	93102-32801	OIL SEAL	1	1			
7	99009-25400	CIRCLIP	1	1			
8	93306-303YN	BEARING	1	1			
9	2PH-E6111-00	GEAR, PRIMARY DRIVE (16T)	1	1			UR
	2PH-E6111-10	GEAR, PRIMARY DRIVE (16T)	1	1			UR
10	93306-201YK	BEARING	1	1			
11	93306-204XT	BEARING	1	1			
12	93102-20815	OIL SEAL	1	1			

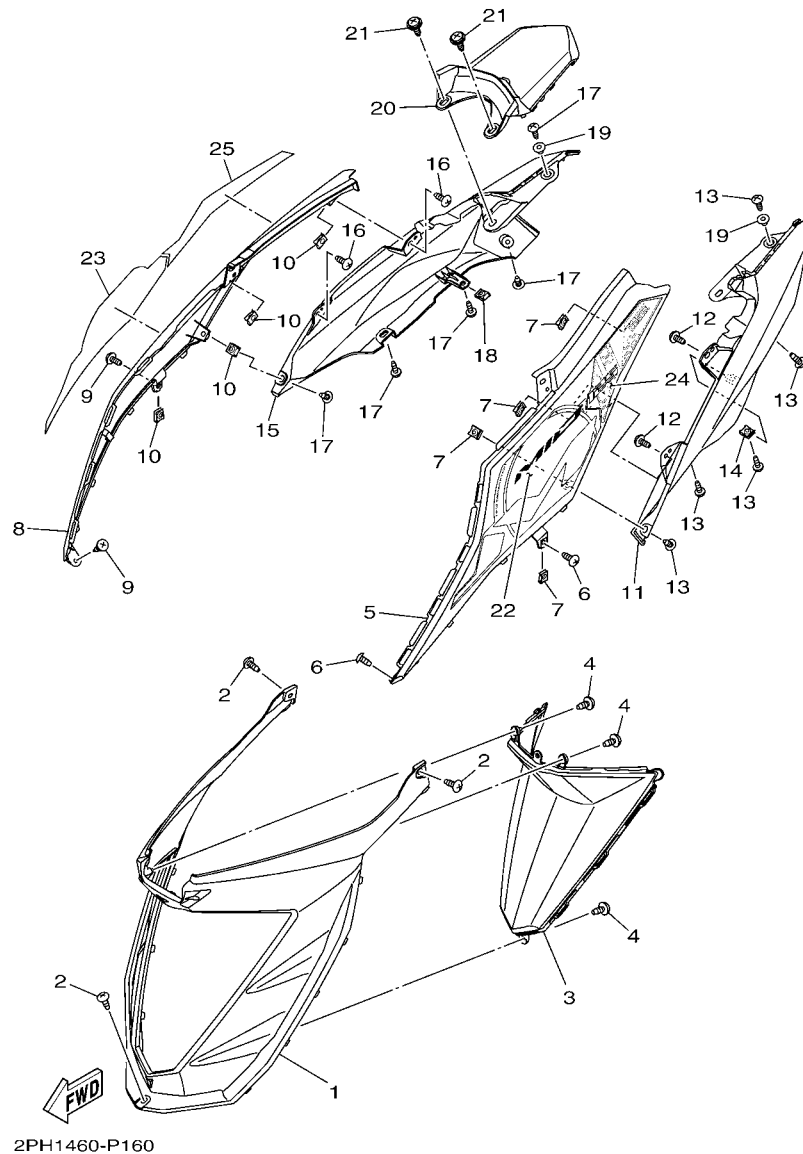


FIG. 16 SIDE COVER

REF. NO.	PART NO.	DESCRIPTION	2PH1	2PH2			REMARKS
1	2PH-F172W-00	COVER	1	1			
2	97707-50016	SCREW, TRUSS HEAD TAPPING	3	3			
3	2PH-F171A-00	COVER, TOP	1	1			
4	97702-50014	SCREW, TAPPING	3	3			
5	2PH-F1711-00-P0	COVER, SIDE 1	1				WM6 FOR WM6,VPRM2
	2PH-F1711-00-P1	COVER, SIDE 1	1	1			FOR SMX
	2PH-F1711-00-P2	COVER, SIDE 1	1	1			FOR DRMK
	2PH-F1711-00-P3	COVER, SIDE 1	1				DBNM8 FOR BMJ
	2PH-F1711-00-P4	COVER, SIDE 1	1	1			FOR RM7
	2PH-F1711-00-P5	COVER, SIDE 1	1				FOR YM6
6	97707-50016	SCREW, TRUSS HEAD TAPPING	2	2			
7	90183-05807	NUT, SPRING	4	4			
8	2PH-F1721-00-P0	COVER, SIDE 2	1				WM6 FOR WM6,VPRM2
	2PH-F1721-00-P1	COVER, SIDE 2	1	1			FOR SMX
	2PH-F1721-00-P2	COVER, SIDE 2	1	1			FOR DRMK
	2PH-F1721-00-P3	COVER, SIDE 2	1				DBNM8 FOR BMJ
	2PH-F1721-00-P4	COVER, SIDE 2	1	1			FOR RM7
	2PH-F1721-00-P5	COVER, SIDE 2	1				FOR YM6
9	97707-50016	SCREW, TRUSS HEAD TAPPING	2	2			
10	90183-05807	NUT, SPRING	4	4			
11	2PH-F1731-00	COVER, SIDE 3	1	1			
12	97702-50014	SCREW, TAPPING	2	2			
13	97707-50016	SCREW, TRUSS HEAD TAPPING	5	5			
14	90183-05807	NUT, SPRING	1	1			
15	2PH-F1741-00	COVER, SIDE 4	1	1			
16	97702-50014	SCREW, TAPPING	2	2			
17	97707-50016	SCREW, TRUSS HEAD TAPPING	5	5			

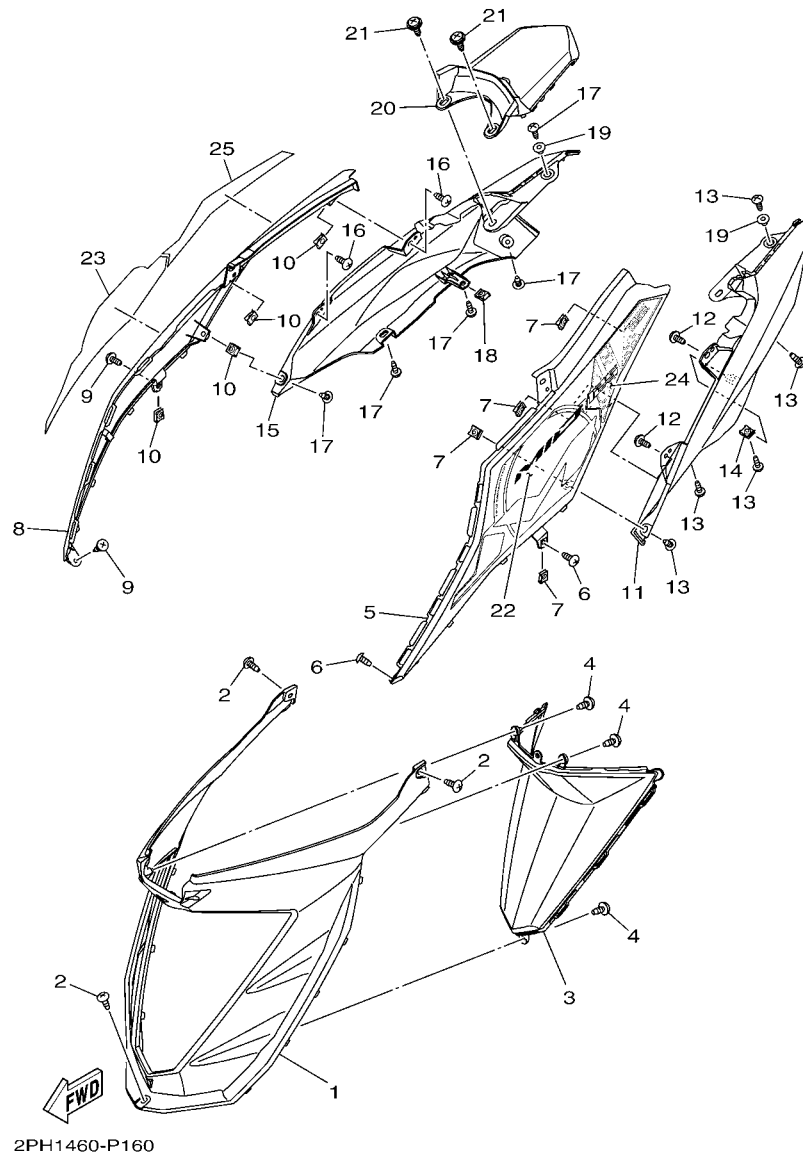


FIG. 16 SIDE COVER

REF. NO.	PART NO.	DESCRIPTION	2PH1	2PH2		REMARKS
18	90183-05807	NUT, SPRING	1	1		
19	90387-05820	COLLAR	2	2		
20	2PH-F171E-00	COVER, SIDE 5	1	1		
21	90159-06810	SCREW, WITH WASHER	2	2		
22	2PH-F173E-00	GRAPHIC 1	1			UR FOR WM6
---	2PH-F173E-10	GRAPHIC 1	1	1		UR FOR SMX
	2PH-F173E-20	GRAPHIC 1	1	1		UR FOR DRMK
	2PH-F173E-30	GRAPHIC 1	1			UR FOR VPRM2
	2PH-F173E-40	GRAPHIC 1	1			UR FOR BMJ
	2PH-F173E-50	GRAPHIC 1	1	1		UR FOR RM7
---	2PH-F173E-60	GRAPHIC 1	1			UR FOR YM6
23	2PH-F173F-00	GRAPHIC 2	1			UR FOR WM6
	2PH-F173F-10	GRAPHIC 2	1	1		UR FOR SMX
	2PH-F173F-20	GRAPHIC 2	1	1		UR FOR DRMK
	2PH-F173F-30	GRAPHIC 2	1			UR FOR VPRM2
---	2PH-F173F-40	GRAPHIC 2	1			UR FOR BMJ
	2PH-F173F-50	GRAPHIC 2	1	1		UR FOR RM7
	2PH-F173F-60	GRAPHIC 2	1			UR FOR YM6
24	2PH-F174G-00	GRAPHIC 3	1			UR FOR WM6
	2PH-F174G-10	GRAPHIC 3	1	1		UR FOR SMX
---	2PH-F174G-20	GRAPHIC 3	1	1		UR FOR DRMK
	2PH-F174G-30	GRAPHIC 3	1			UR FOR VPRM2
	2PH-F174G-40	GRAPHIC 3	1			UR FOR BMJ
	2PH-F174G-50	GRAPHIC 3	1	1		UR FOR RM7
	2PH-F174G-60	GRAPHIC 3	1			UR FOR YM6
---	25	2PH-F174H-00	1			UR FOR WM6
	2PH-F174H-10	GRAPHIC 4	1	1		UR FOR SMX

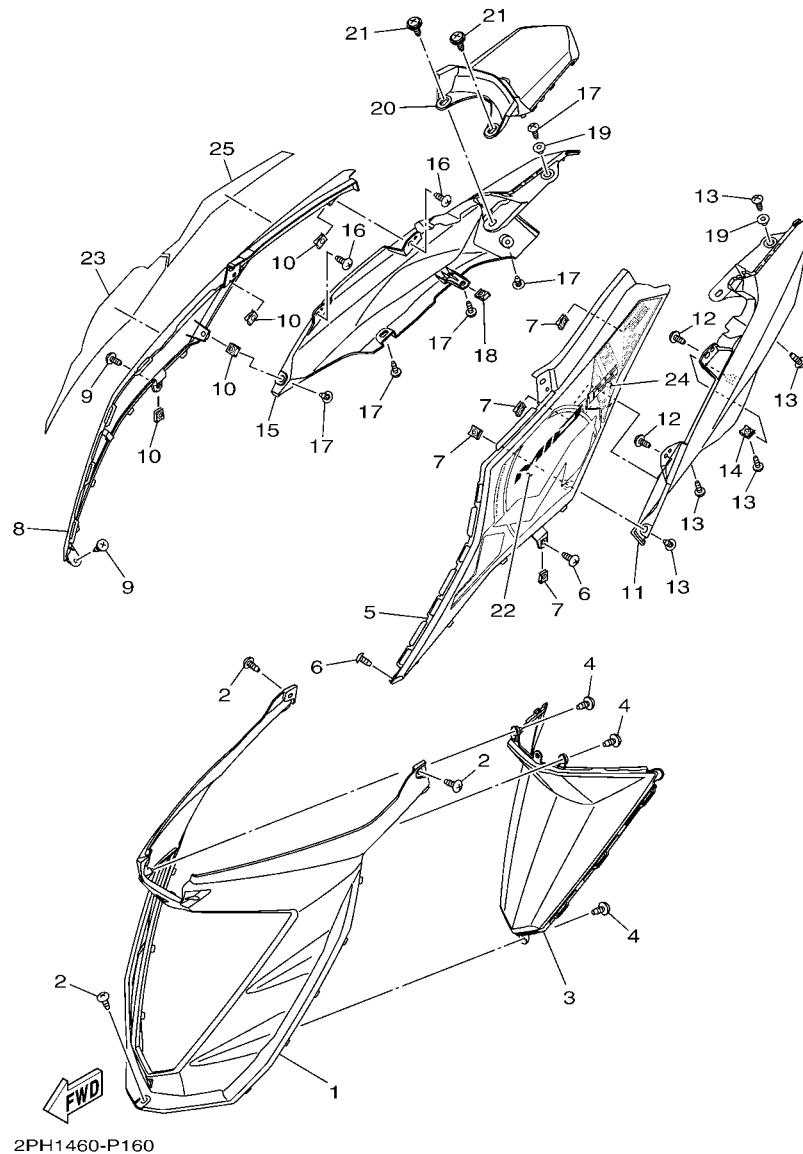


FIG. 16 SIDE COVER

REF. NO.	PART NO.	DESCRIPTION	2PH1	2PH2		REMARKS
25	2PH-F174H-20	GRAPHIC 4	1	1		UR FOR DRMK
	2PH-F174H-30	GRAPHIC 4	1			UR FOR VPRM2
	2PH-F174H-40	GRAPHIC 4	1			UR FOR BMJ
	2PH-F174H-50	GRAPHIC 4	1	1		UR FOR RM7
	2PH-F174H-60	GRAPHIC 4	1			UR FOR YM6
<hr/>						
<hr/>						
<hr/>						
<hr/>						
<hr/>						
<hr/>						
<hr/>						
<hr/>						
<hr/>						
<hr/>						

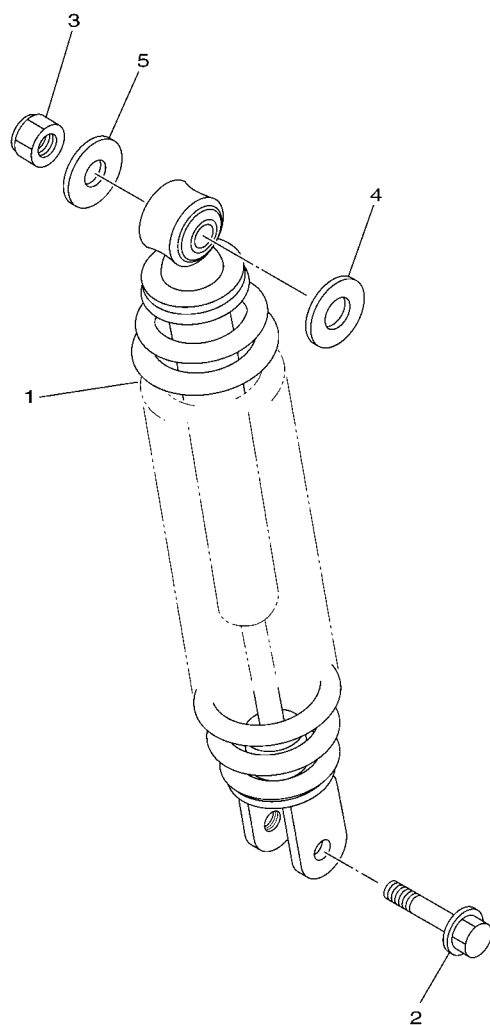


FIG. 17 REAR ARM & SUSPENSION

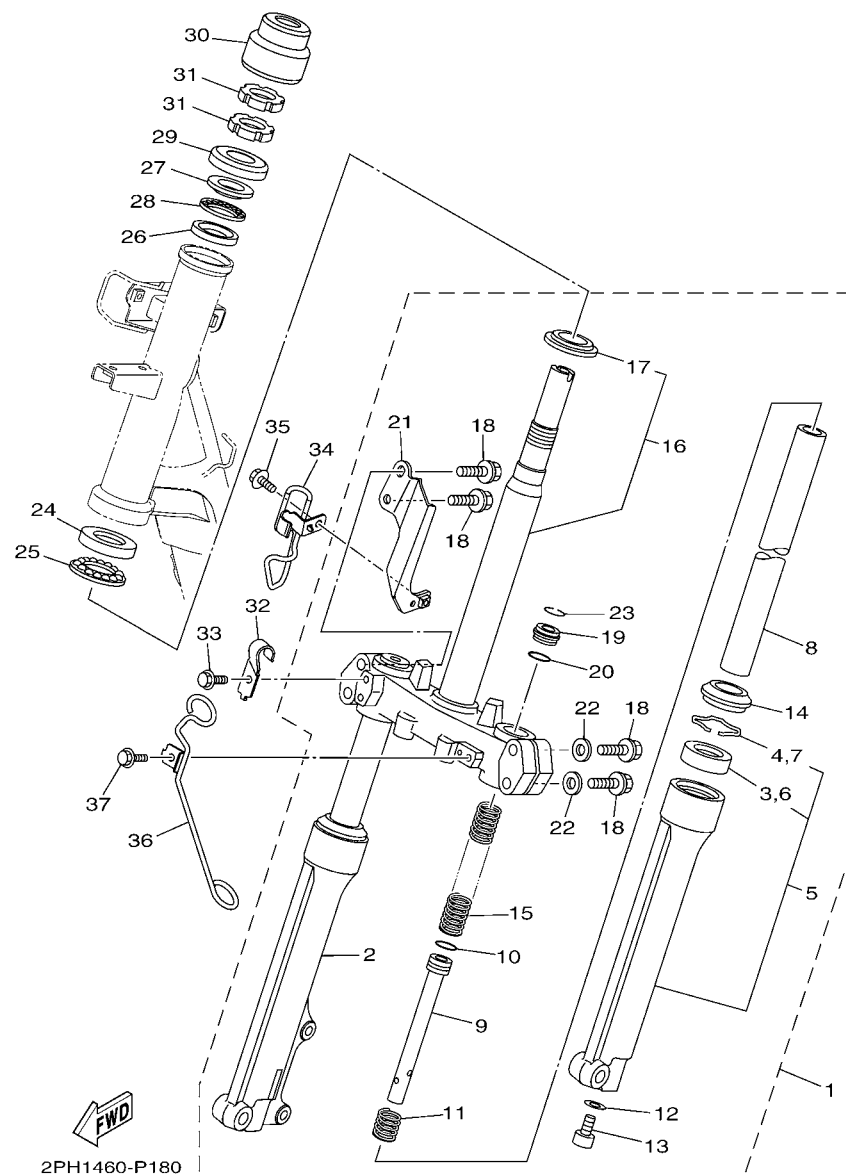


FIG. 18 STEERING

REF. NO.	PART NO.	DESCRIPTION	2PH1	2PH2			REMARKS
1	2PH-F3100-00	FRONT FORK ASSY	1	1			
2	54P-F3136-10	.TUBE, OUTER	1	1			
3	3AY-F3145-00	..OIL SEAL	1	1			
4	5P0-F3156-00	..RING, SNAP	1	1			
5	54P-F3126-10	.TUBE, OUTER (L.H)	1	1			
6	3AY-F3145-00	..OIL SEAL	1	1			
7	5P0-F3156-00	..RING, SNAP	1	1			
8	54P-F3110-10	.INNER TUBE COMP.1	2	2			
9	2PH-F3170-00	.CYLINDER COMP., FRONT FORK	2	2			
10	2JG-F3157-00	.RING, PISTON	2	2			
11	5NM-F3152-00	.SPRING, SUB	2	2			
12	2BU-F3158-00	.GASKET	2	2			
13	278-F3181-50	.BOLT, HEXAGON SOCKET HEAD	2	2			
14	5LM-F3144-00	.SEAL, DUST	2	2			
15	2PH-F3141-00	.SPRING, FRONT FORK	2	2			
16	2PH-F3340-00	..UNDER BRACKET COMP.	1	1			
17	4FP-F3411-10	..RACE, BALL 1	1	1			
18	4D0-F3346-00	.BOLT 1	4	4			
19	1FC-F3111-10	.BOLT, CAP	2	2			
20	2JG-F3147-00	.O-RING	2	2			
21	54P-F334G-00	.BRACKET 1	1	1			
22	4D0-F3165-00	.WASHER, FELT	2	2			
23	5P0-F3153-00	.RING, SNAP	1	1			
24	1KL-F3412-10	RACE, BALL 2	1	1			
25	5VL-F341E-10	RETAINER, BALL BEARING	1	1			
26	4RT-F3412-10	RACE, BALL 2	1	1			
27	4RT-F3411-10	RACE, BALL 1	1	1			

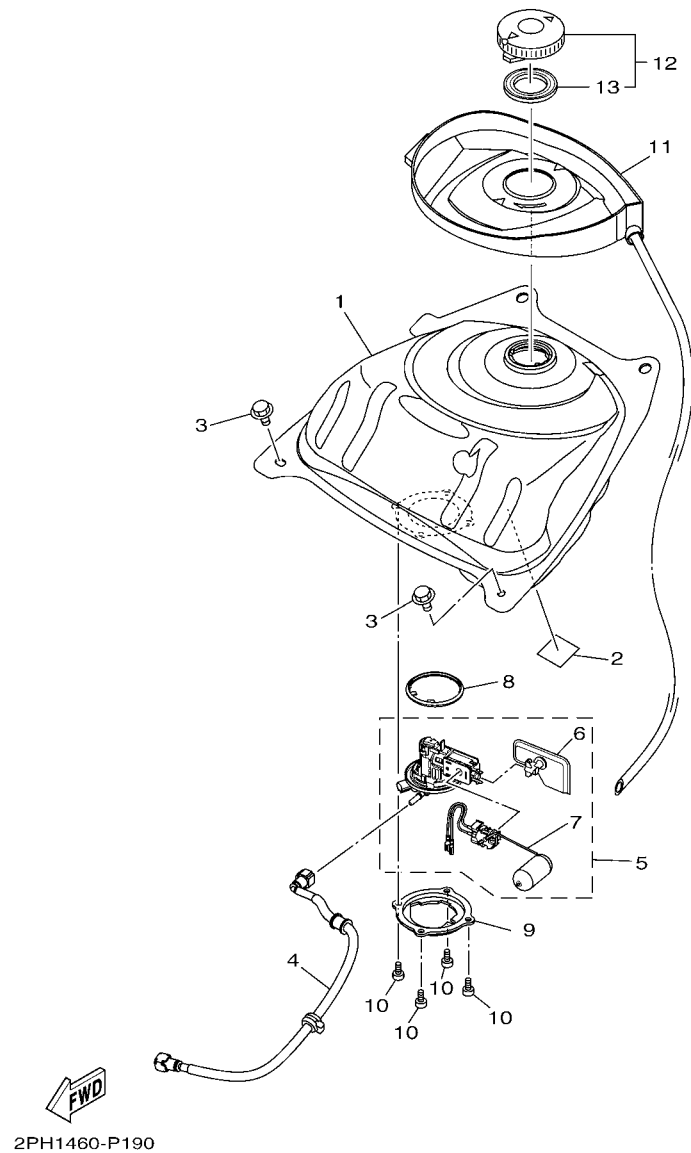


FIG. 19 FUEL TANK

[illegible]

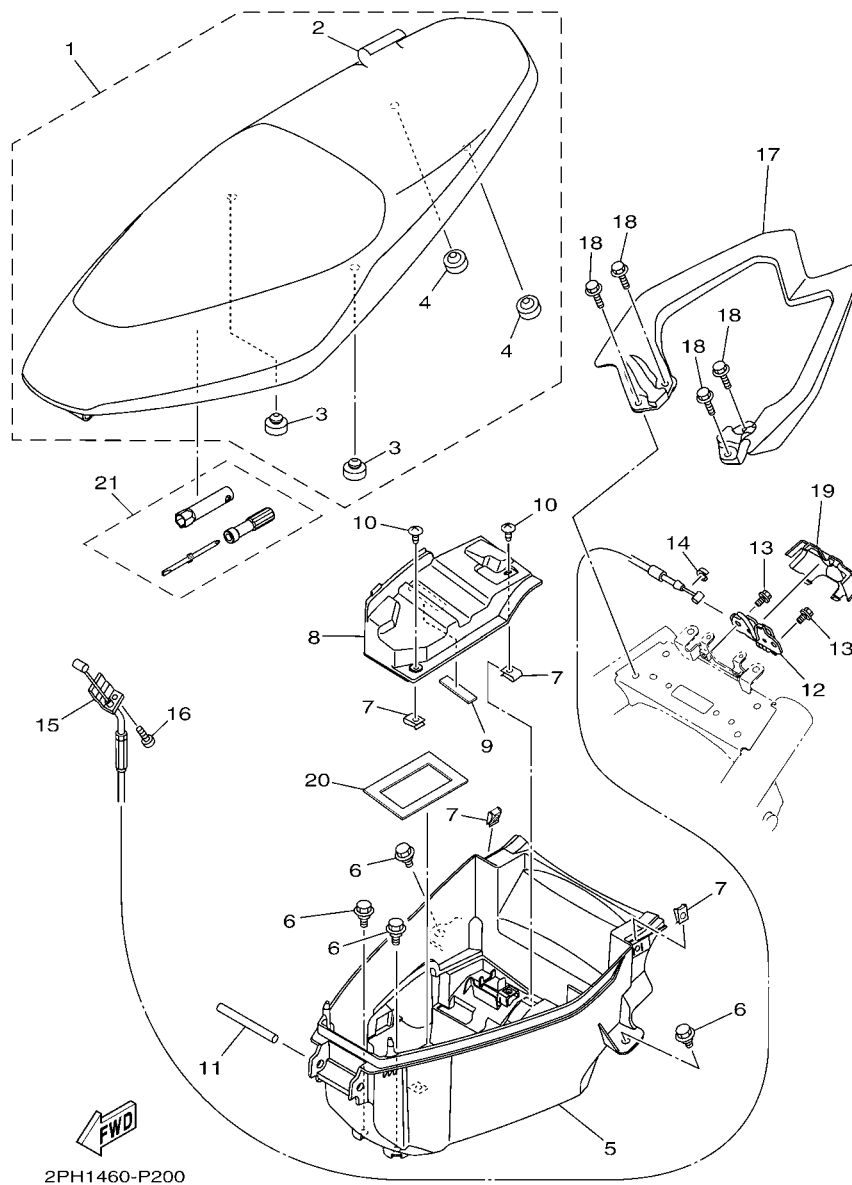


FIG. 20 SEAT

REF. NO.	PART NO.	DESCRIPTION	2PH1	2PH2			REMARKS
1	2PH-F4730-00	DOUBLE SEAT ASSY	1	1			
2	2PH-F470F-00	.SEAT COVER COMP.	1	1			
3	3C1-F4741-00	.PAD, SEAT	2	2			
4	5BP-F4741-00	.PAD, SEAT	2	2			
5	2PH-F4704-00	BOX ASSY	1	1			
6	90109-06202	BOLT	4	4			
7	90183-05807	NUT, SPRING	4	4			
8	2PH-H2129-00	COVER, BATTERY	1	1			
9	90520-03806	DAMPER, PLATE	1	1			
10	97707-50012	SCREW, TRUSS HEAD TAPPING	2	2			
11	5TL-F4727-00	PIN, SEAT FITTING	1	1			
12	40D-F4780-01	SEAT LOCK ASSY	1	1			
13	95022-06010	BOLT, FLANGE	2	2			
14	1S7-F4768-00	STOPPER	1	1			
15	2PH-F478E-00	CABLE, SEAT LOCK	1	1			UR
16	2PH-F478E-10	CABLE, SEAT LOCK	1	1			UR
17	98507-05010	SCREW, PAN HEAD	1	1			
18	2PH-F4773-00-P0	HANDLE, SEAT	1	1			DBNM8(A,B,C,D,F)
19	2PH-F4773-00-P1	HANDLE, SEAT	1				BMJ(E)
20	2PH-F4773-00-P2	HANDLE, SEAT	1				WM6(G)
21	95822-06020	BOLT, FLANGE	4	4			
22	2PH-F472T-00	COVER, SEAT LOCK	1	1			
23	1KP-H2176-00	DAMPER	1	1			
24	54P-F8100-00	TOOL KIT	1	1			

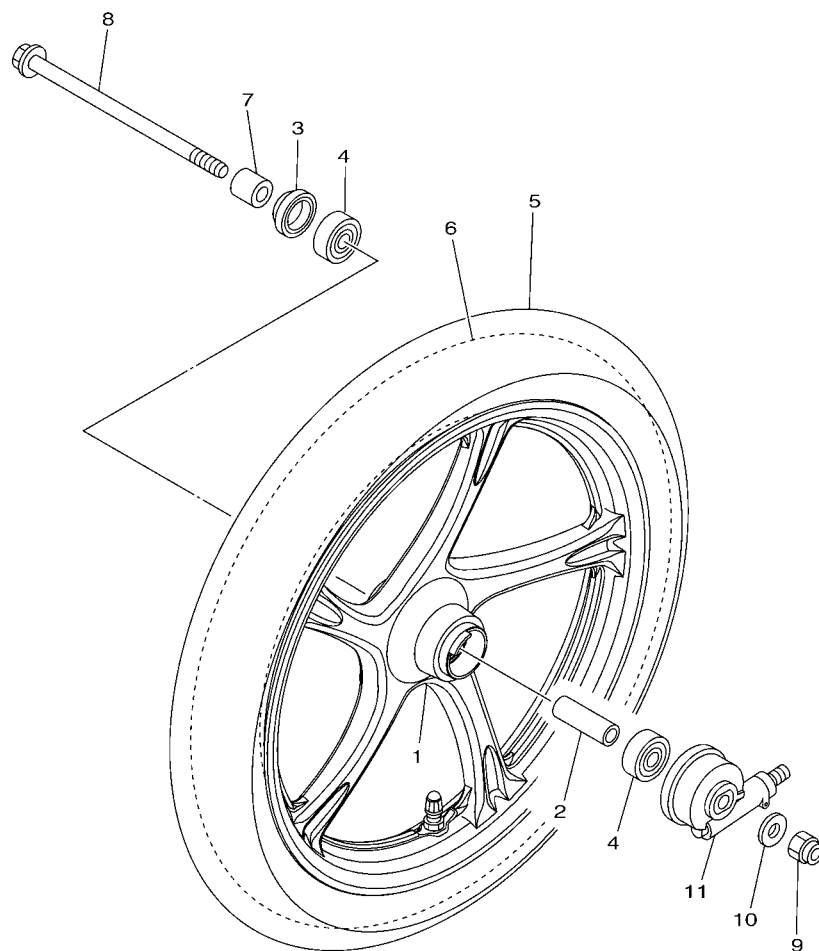


FIG. 21 FRONT WHEEL FOR CAST WHEEL

[illegible]

[illegible]

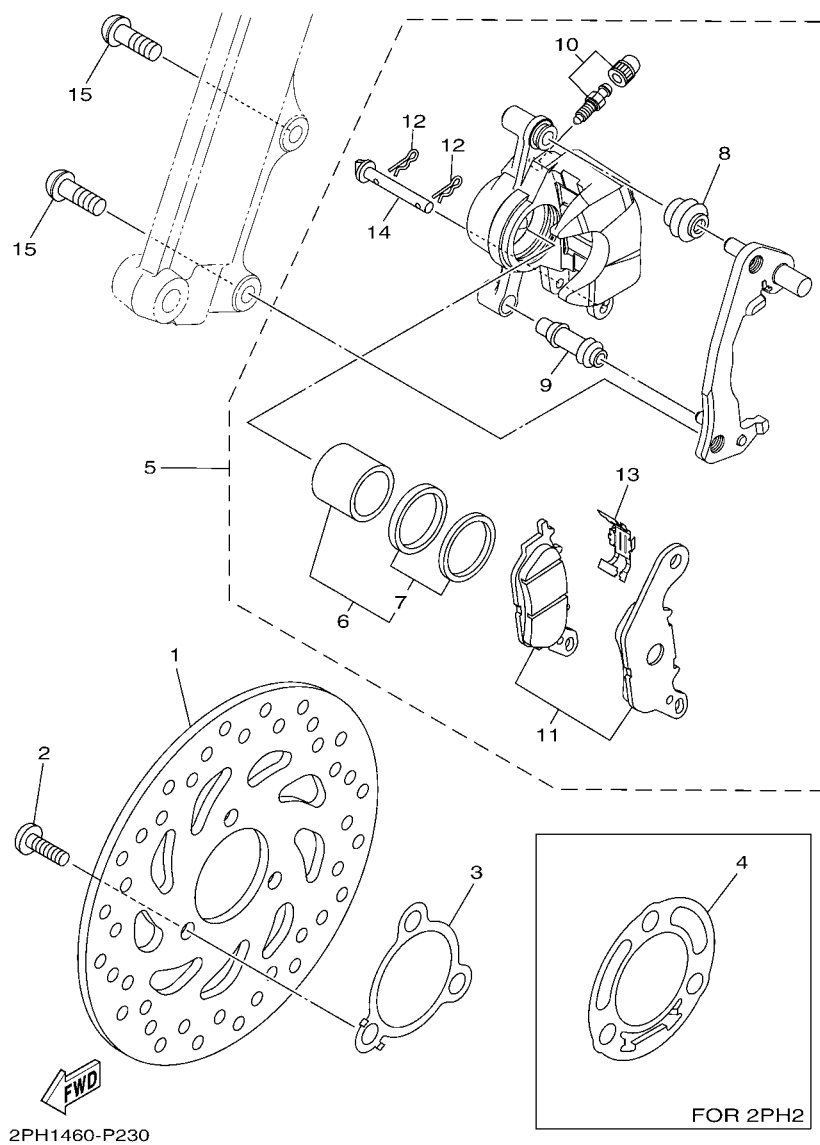


FIG. 23 FRONT BRAKE CALIPER

[illegible]

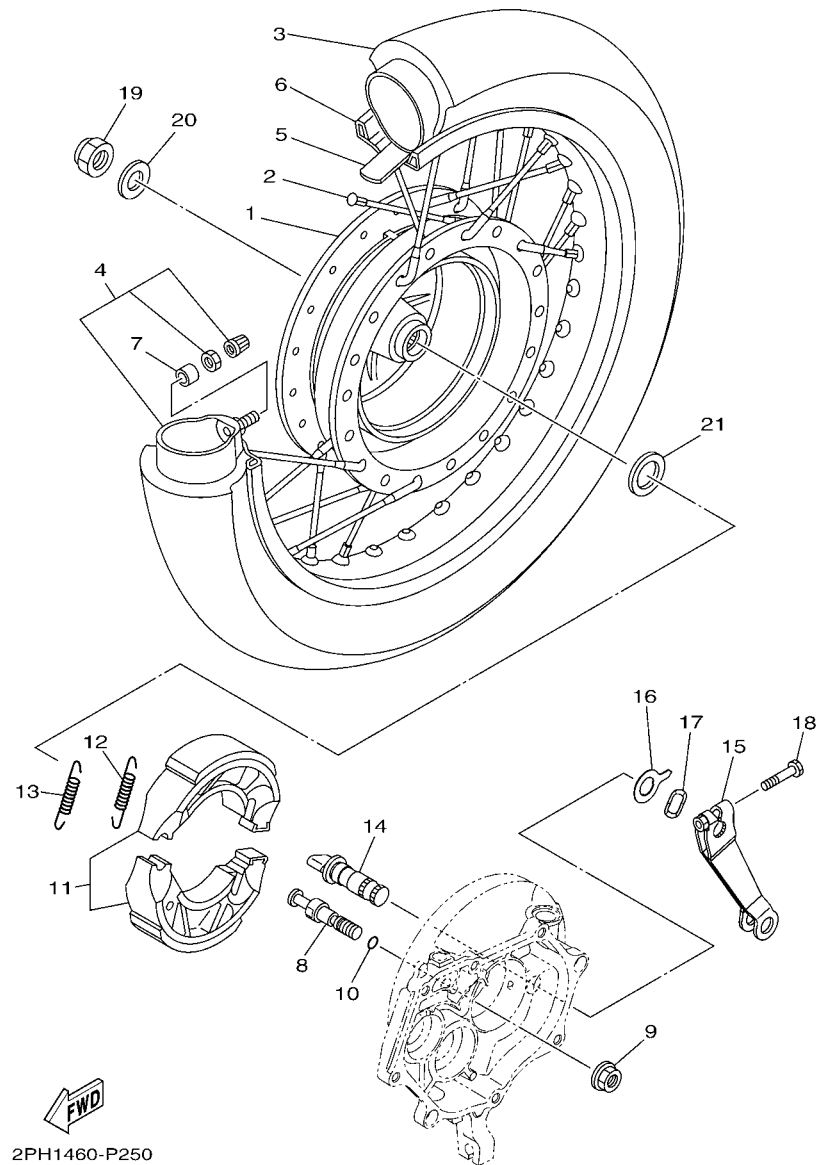


FIG. 25 REAR WHEEL FOR SPOKE WHEEL

REF. NO.	PART NO.	DESCRIPTION	2PH1	2PH2			REMARKS
1	2PH-F5311-00-35	HUB, REAR		1			UR SL
	5P0-F5311-00	HUB, REAR		1			UR
2	28D-F5304-01	SPOKE SET, REAR		1			
3	94108-14802	TIRE (80/90-14M/C 40P NR76)		1			INOUE
4	94208-14802	TUBE (80/90-14M/C TR4)		1			INOUE
5	94307-14802	BAND, RIM (22.0-14)		1			INOUE
6	94416-14801	RIM (1.60-14)		1			
7	90387-08815	COLLAR		1			
8	54P-F5326-00	PIN, PIVOT		1			
9	95702-10500	NUT, FLANGE		1			
10	93210-07802	O-RING		1			
11	1LB-F530K-00	BRAKE SHOE SET		1			
12	90506-12001	SPRING, TENSION		1			
13	90506-15001	SPRING, TENSION		1			
14	5MX-F5351-00	CAMSHAFT		1			
15	2PH-F5355-00	LEVER, CAMSHAFT		1			
16	5MX-F533A-00	PLATE, INDICATOR		1			
17	90206-14093	WASHER, WAVE		1			
18	90101-06046	BOLT		1			
19	90185-16800	NUT, SELF-LOCKING		1			
20	90201-16810	WASHER, PLATE		1			
21	90201-220J8	WASHER, PLATE		1			

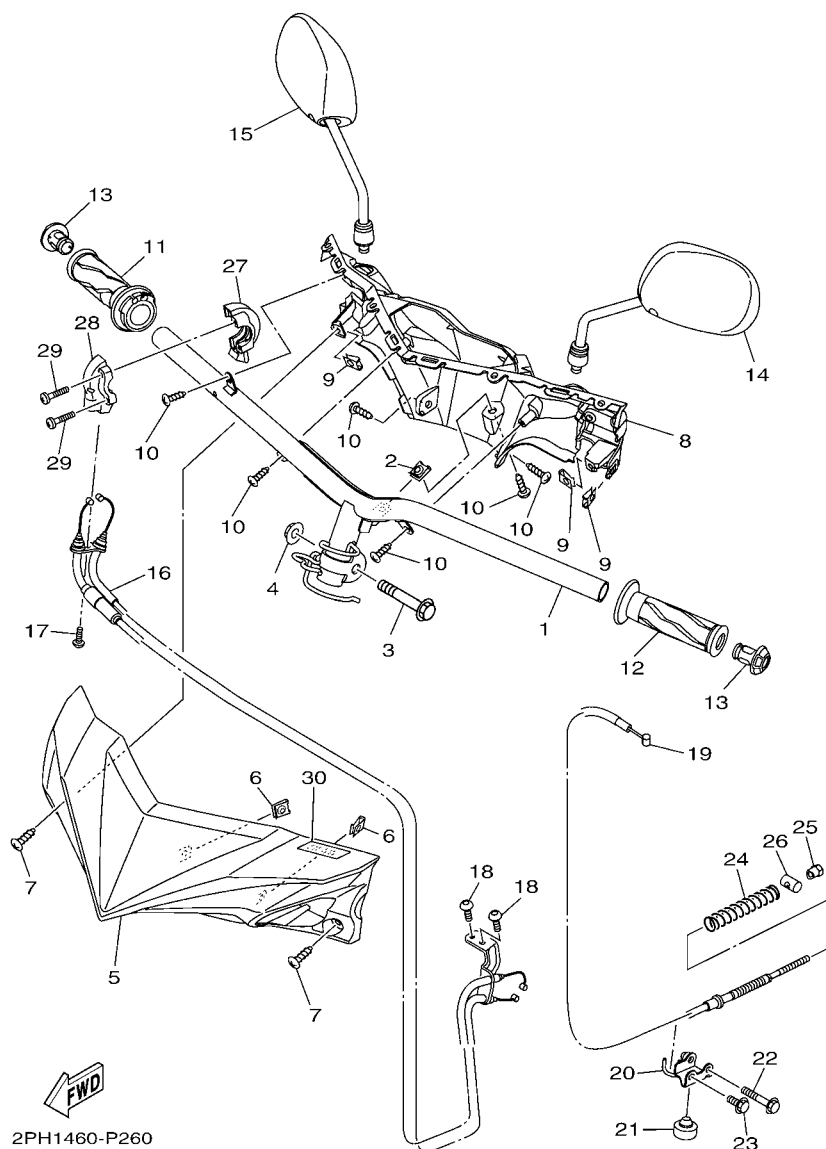


FIG. 26 STEERING HANDLE & CABLE

REF. NO.	PART NO.	DESCRIPTION	2PH1	2PH2			REMARKS
1	2PH-F6110-00	HANDLE COMP.	1	1			
2	90183-05807	NUT, SPRING	1	1			
3	90105-10896	BOLT, FLANGE	1	1			
4	90185-10011	NUT, SELF-LOCKING	1	1			
5	2PH-F6143-00-P0	COVER, HANDLE UPPER 1	1				DBNM8 FOR WM6
	2PH-F6143-00-P1	COVER, HANDLE UPPER 1	1	1			FOR SMX
	2PH-F6143-00-P2	COVER, HANDLE UPPER 1	1	1			FOR DRMK
	2PH-F6143-00-P3	COVER, HANDLE UPPER 1	1				WM6 FOR VPRM2
	2PH-F6143-00-P4	COVER, HANDLE UPPER 1	1				FOR BMJ
	2PH-F6143-00-P5	COVER, HANDLE UPPER 1	1	1			FOR RM7
	2PH-F6143-00-P6	COVER, HANDLE UPPER 1	1				FOR YM6
6	90183-05807	NUT, SPRING	2	2			
7	97707-50016	SCREW, TRUSS HEAD TAPPING	2	2			
8	2PH-F6145-00	COVER, HANDLE UPPER 2	1	1			
9	90183-05807	NUT, SPRING	3	3			
10	97707-50016	SCREW, TRUSS HEAD TAPPING	6	6			
11	2PH-F6240-00	GRIP ASSY	1	1			
12	1DY-F6241-00	GRIP	1	1			
13	2PH-F6246-00	END, GRIP	2	2			
14	2P2-F6280-11	REAR VIEW MIRROR ASSY (LEFT)	1	1			UR
	54P-F6280-00	REAR VIEW MIRROR ASSY (LEFT)	1	1			UR
15	2P2-F6290-11	REAR VIEW MIRROR ASSY (RIGHT)	1	1			UR
	54P-F6290-00	REAR VIEW MIRROR ASSY (RIGHT)	1	1			UR
16	2PH-F6301-00	THROTTLE CABLE ASSY	1	1			UR
	2PH-F6301-10	THROTTLE CABLE ASSY	1	1			UR
17	92012-05016	BOLT, BUTTON HEAD	1	1			
18	92012-05010	BOLT, BUTTON HEAD	2	2			

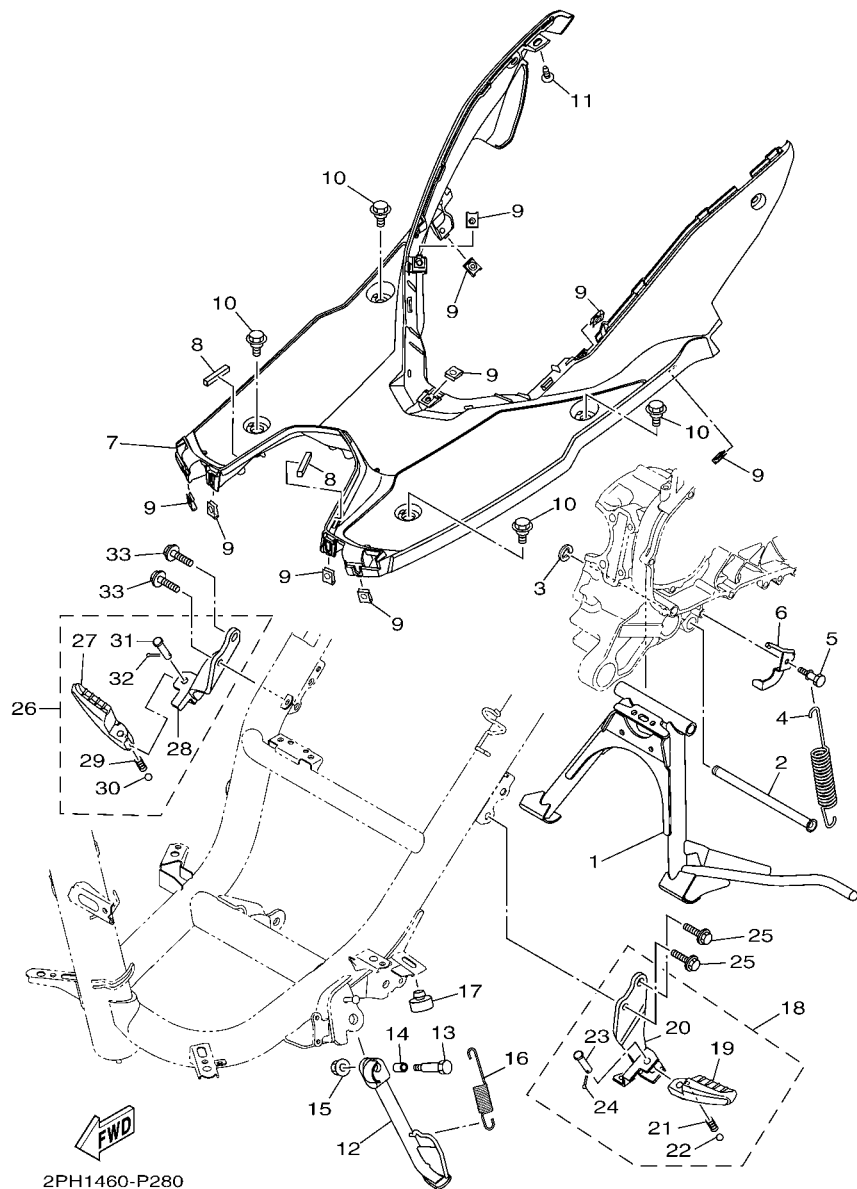


FIG. 28 STAND & FOOTREST

REF. NO.	PART NO.	DESCRIPTION	2PH1	2PH2			REMARKS
1	2PH-F7111-00	STAND, MAIN	1	1			
2	2PH-F7112-00	SHAFT, MAIN STAND	1	1			
3	99002-09600	CLIP	1	1			
4	90506-35821	SPRING, TENSION	1	1			
5	5LW-F7254-00	HOOK	1	1			
6	2PH-F7267-00	GUIDE, WIRE	1	1			
7	2PH-F7481-00	BOARD, FOOTREST	1	1			
8	90520-08004	DAMPER, PLATE	2	2			
9	90183-05807	NUT, SPRING	9	9			
10	90109-06220	BOLT	4	4			
11	97707-50016	SCREW, TRUSS HEAD TAPPING	1	1			
12	2PH-F7311-00	STAND, SIDE	1	1			
13	90101-08847	BOLT	1	1			
14	90387-08820	COLLAR	1	1			
15	95602-08200	NUT, SELF-LOCKING	1	1			
16	90506-20514	SPRING, TENSION	1	1			
17	2PH-F6257-00	STOPPER	1	1			
18	2PH-F7430-00	REAR FOOTREST ASSY 1	1	1			
19	2PH-F7431-00	.FOOTREST, REAR 1	1	1			
20	2PH-F7432-00	.BRACKET 1	1	1			
21	90501-12743	.SPRING, COMPRESSION	1	1			
22	93501-04830	.BALL	1	1			
23	91701-08035	.PIN	1	1			
24	91401-25015	.PIN, COTTER	1	1			
25	95802-08030	BOLT, FLANGE	2	2			
26	2PH-F7440-00	REAR FOOTREST ASSY 2	1	1			
27	2PH-F7441-00	.FOOTREST, REAR 2	1	1			

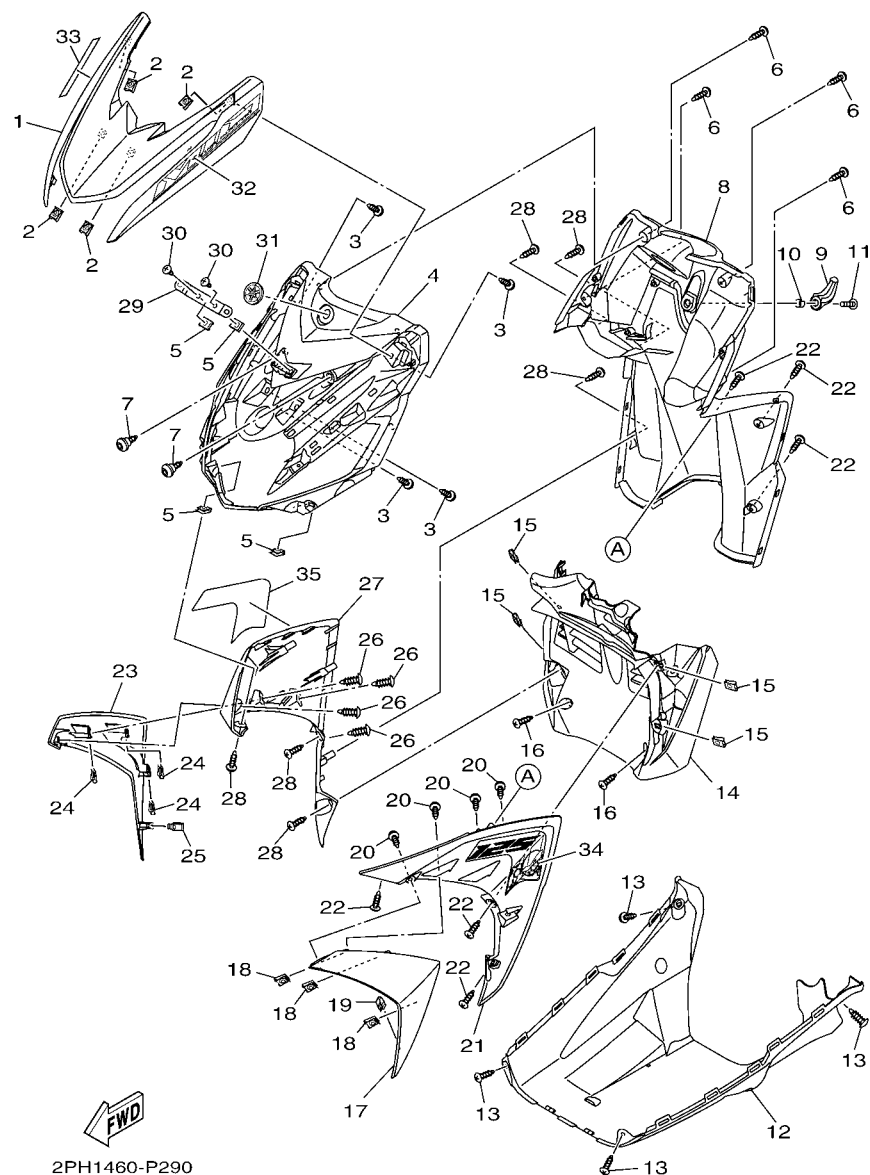


FIG. 29 LEG SHIELD

REF. NO.	PART NO.	DESCRIPTION	2PH1	2PH2		REMARKS
1	2PH-F3391-00-P0	PANEL, FRONT	1			WM6 FOR WM6,VPRM2
	2PH-F3391-00-P1	PANEL, FRONT	1	1		FOR SMX
	2PH-F3391-00-P2	PANEL, FRONT	1	1		FOR DRMK
	2PH-F3391-00-P3	PANEL, FRONT	1			DBNM8 FOR BMJ
	2PH-F3391-00-P4	PANEL, FRONT	1	1		FOR RM7
	2PH-F3391-00-P5	PANEL, FRONT	1			FOR YM6
2	90183-05807	NUT, SPRING	4	4		
3	97702-50014	SCREW, TAPPING	4	4		
4	2PH-F8311-00	LEG SHIELD 1	1	1		
5	90183-05807	NUT, SPRING	4	4		
6	97707-50016	SCREW, TRUSS HEAD TAPPING	4	4		
7	90109-068A3	BOLT	2	2		
8	2PH-F8300-00	LEG SHIELD ASSY	1	1		
9	2PH-F8257-00	HOOK 1	1	1		
10	2PH-F8373-00	COLLAR	1	1		
11	90111-06051	BOLT,HEX. SOCKET BUTTON	1	1		
12	2PH-F8385-00	COVER, UNDER	1	1		
13	97707-50016	SCREW, TRUSS HEAD TAPPING	4	4		
14	2PH-F1552-00	FENDER, INNER	1	1		
15	90183-05807	NUT, SPRING	4	4		
16	97707-50016	SCREW, TRUSS HEAD TAPPING	2	2		
17	2PH-F8345-00	MOLE 1	1	1		
18	90183-05807	NUT, SPRING	3	3		
19	44D-F8379-00	HOOK	1	1		
20	97702-50014	SCREW, TAPPING	4	4		
21	2PH-F835U-00-P0	PANEL 1	1			WM6 FOR WM6,YM6
	2PH-F835U-00-P1	PANEL 1	1	1		FOR SMX

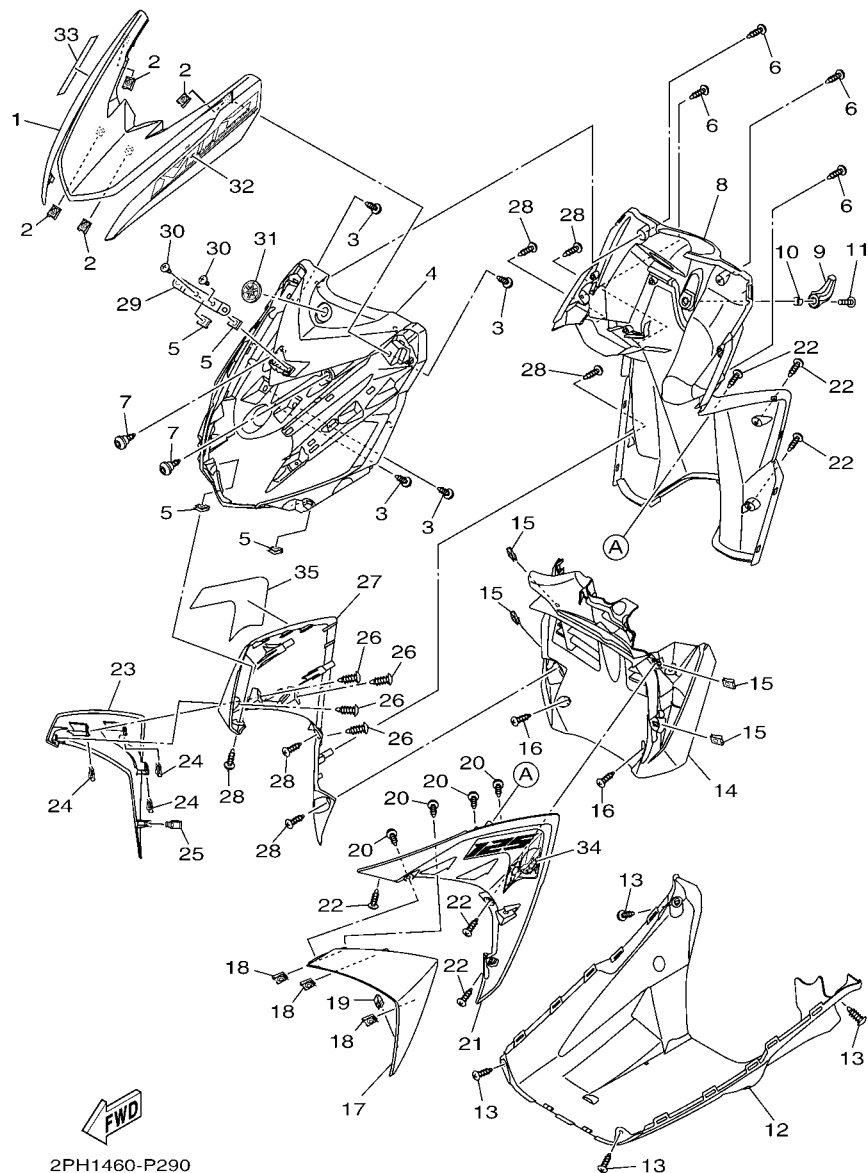


FIG. 29 LEG SHIELD

REF. NO.	PART NO.	DESCRIPTION	2PH1	2PH2			REMARKS
21	2PH-F835U-00-P2	PANEL 1	1	1			FOR DRMK
	2PH-F835U-00-P3	PANEL 1	1				FOR VPRM2
	2PH-F835U-00-P4	PANEL 1	1				FOR BMJ
	2PH-F835U-00-P5	PANEL 1	1	1			FOR RM7
22	97707-50016	SCREW, TRUSS HEAD TAPPING	6	6			
23	2PH-F8346-00	MOLE 2	1	1			
24	90183-05807	NUT, SPRING	3	3			
25	44D-F8379-00	HOOK	1	1			
26	97702-50014	SCREW, TAPPING	4	4			
27	2PH-F835V-00-P0	PANEL 2	1				WM6 FOR WM6,YM6
	2PH-F835V-00-P1	PANEL 2	1	1			FOR SMX
	2PH-F835V-00-P2	PANEL 2	1	1			FOR DRMK
	2PH-F835V-00-P3	PANEL 2	1				FOR VPRM2
	2PH-F835V-00-P4	PANEL 2	1				FOR BMJ
	2PH-F835V-00-P5	PANEL 2	1	1			FOR RM7
28	97707-50016	SCREW, TRUSS HEAD TAPPING	6	6			
29	5TP-H454E-01	BRACKET, NUMBER PLATE	1	1			
30	97702-50014	SCREW, TAPPING	2	2			
31	5TL-F3108-00	EMBLEM	1	1			
32	2PH-F832L-00	GRAPHIC, 13	1				UR FOR WM6
	2PH-F832L-10	GRAPHIC, 13	1	1			UR FOR SMX
	2PH-F832L-20	GRAPHIC, 13	1	1			UR FOR DRMK
	2PH-F832L-30	GRAPHIC, 13	1				UR FOR VPRM2
	2PH-F832L-40	GRAPHIC, 13	1				UR FOR BMJ
	2PH-F832L-50	GRAPHIC, 13	1	1			UR FOR RM7
	2PH-F832L-60	GRAPHIC, 13	1				UR FOR YM6
33	2PH-F831Y-00	GRAPHIC, 14	1				UR FOR WM6

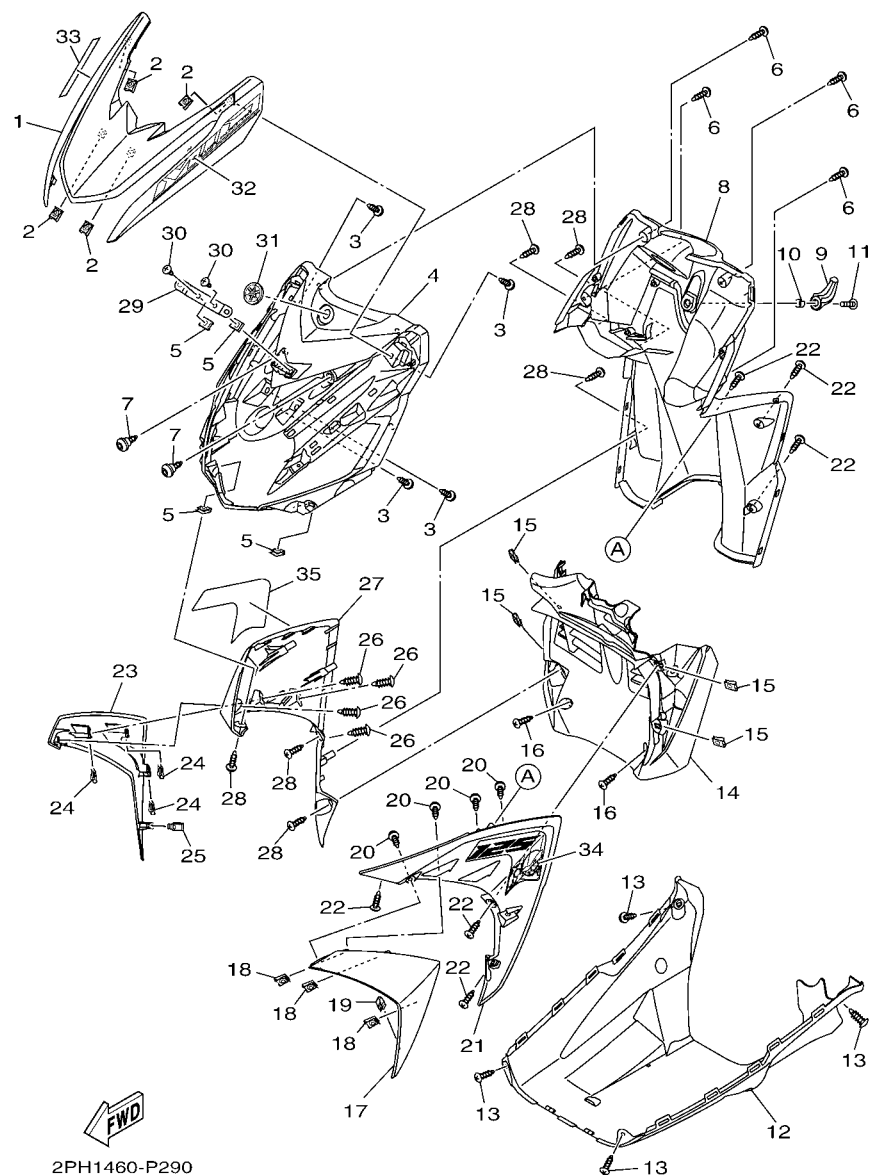


FIG. 29 LEG SHIELD

REF. NO.	PART NO.	DESCRIPTION	2PH1	2PH2		REMARKS
33	2PH-F831Y-10	GRAPHIC, 14	1	1		UR FOR SMX
	2PH-F831Y-20	GRAPHIC, 14	1	1		UR FOR DRMK
	2PH-F831Y-30	GRAPHIC, 14	1			UR FOR VPRM2
	2PH-F831Y-40	GRAPHIC, 14	1			UR FOR BMJ
	2PH-F831Y-50	GRAPHIC, 14	1	1		UR FOR RM7
	2PH-F831Y-60	GRAPHIC, 14	1			UR FOR YM6
34	2PH-F832B-00	GRAPHIC, 15	1			UR FOR WM6
	2PH-F832B-10	GRAPHIC, 15	1	1		UR FOR SMX
	2PH-F832B-20	GRAPHIC, 15	1	1		UR FOR DRMK
	2PH-F832B-30	GRAPHIC, 15	1			UR FOR VPRM2
	2PH-F832B-40	GRAPHIC, 15	1			UR FOR BMJ
	2PH-F832B-50	GRAPHIC, 15	1	1		UR FOR RM7
	2PH-F832B-60	GRAPHIC, 15	1			UR FOR YM6
35	2PH-F832C-00	GRAPHIC, 16	1			UR FOR WM6
	2PH-F832C-10	GRAPHIC, 16	1	1		UR FOR SMX
	2PH-F832C-20	GRAPHIC, 16	1	1		UR FOR DRMK
	2PH-F832C-30	GRAPHIC, 16	1			UR FOR VPRM2
	2PH-F832C-40	GRAPHIC, 16	1			UR FOR BMJ
	2PH-F832C-50	GRAPHIC, 16	1	1		UR FOR RM7
	2PH-F832C-60	GRAPHIC, 16	1			UR FOR YM6

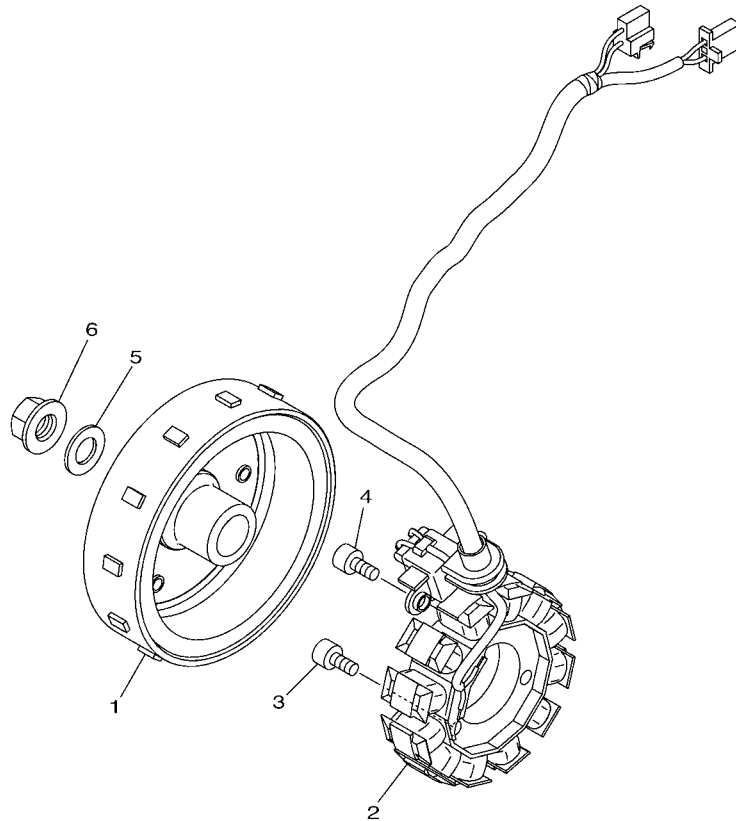


FIG. 30 GENERATOR

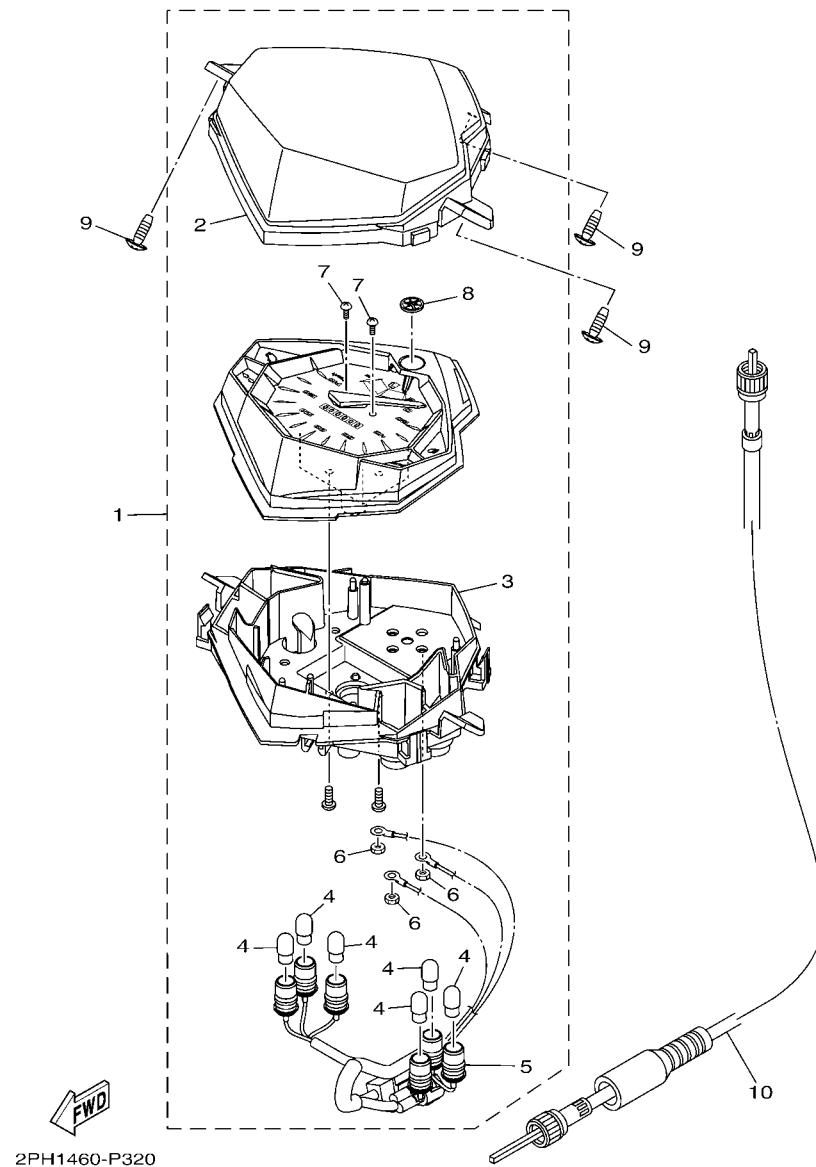


FIG. 32 METER

[illegible]

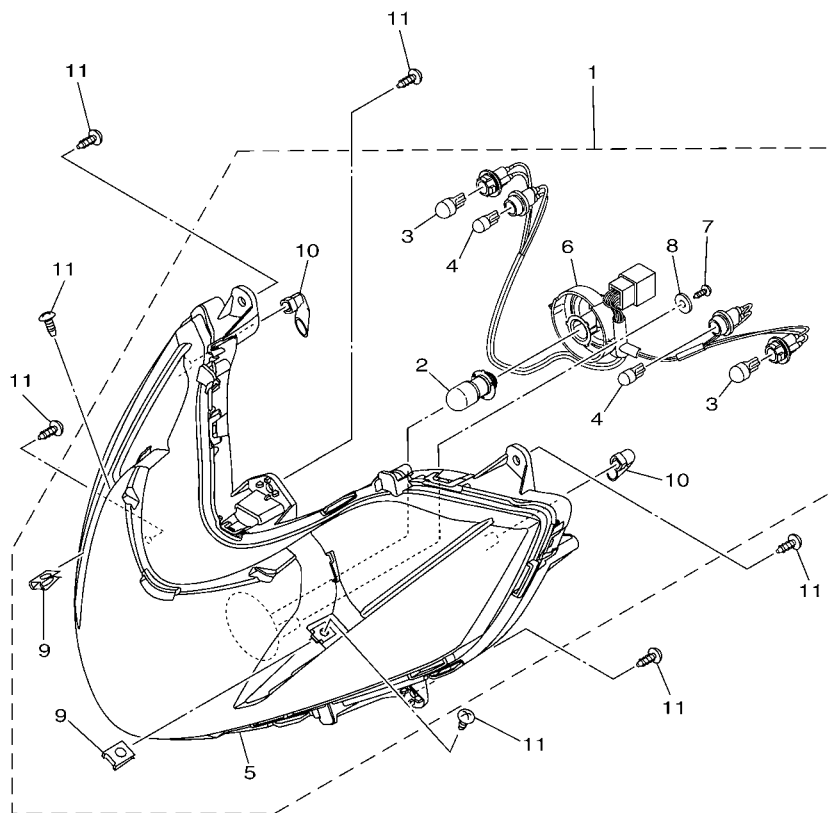
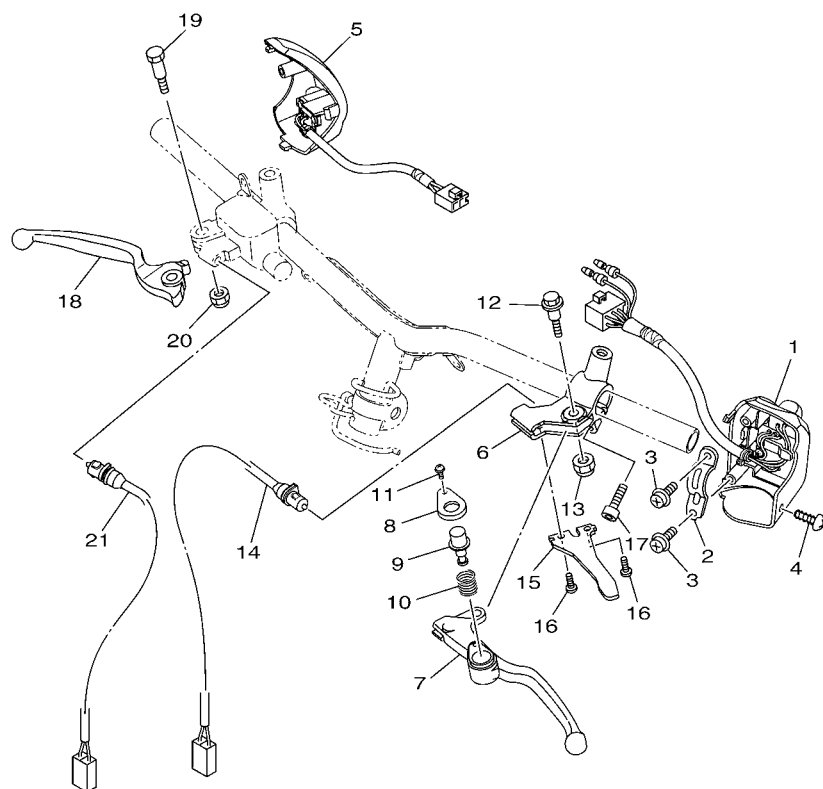


FIG. 33 HEADLIGHT

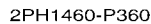
[illegible]



2PH1460-P350

FIG. 35 HANDLE SWITCH & LEVER

REF. NO.	PART NO.	DESCRIPTION	2PH1	2PH2			REMARKS
1	1KP-H3973-10	SWITCH, HANDLE 3	1	1			UR
	1KP-H3973-00	SWITCH, HANDLE 3	1	1			UR
2	5TL-H3955-20	BRACKET 1	1	1			
3	97602-05216	SCREW, PAN HEAD WITH WASHER	2	2			
4	97707-50016	SCREW, TRUSS HEAD TAPPING	1	1			
5	1KP-H3976-10	SWITCH, HANDLE 1	1	1			UR
	1KP-H3976-00	SWITCH, HANDLE 1	1	1			UR
6	1LB-H2911-00	HOLDER, LEVER 1	1	1			
7	1LB-H3912-00	LEVER 1	1	1			
8	1LB-H3935-00	COVER	1	1			
9	1LB-H3967-00	PIN, LOCK 1	1	1			
10	40D-H3962-00	SPRING	1	1			
11	40D-H396X-00	SCREW, LEVER FITTING	1	1			
12	90109-06798	BOLT	1	1			
13	95602-06100	NUT, U	1	1			
14	1LB-H3980-00	FRONT STOP SWITCH ASSY	1	1			
15	1LB-H2556-00	DAMPER, STOPPER	1	1			
16	98502-05010	SCREW, PAN HEAD	2	2			
17	91312-06020	BOLT	1	1			
18	5TL-H3922-00	LEVER 2	1	1			
19	90109-06255	BOLT	1	1			
20	95602-06100	NUT, U	1	1			
21	54P-H3980-00	FRONT STOP SWITCH ASSY	1	1			

[illegible]

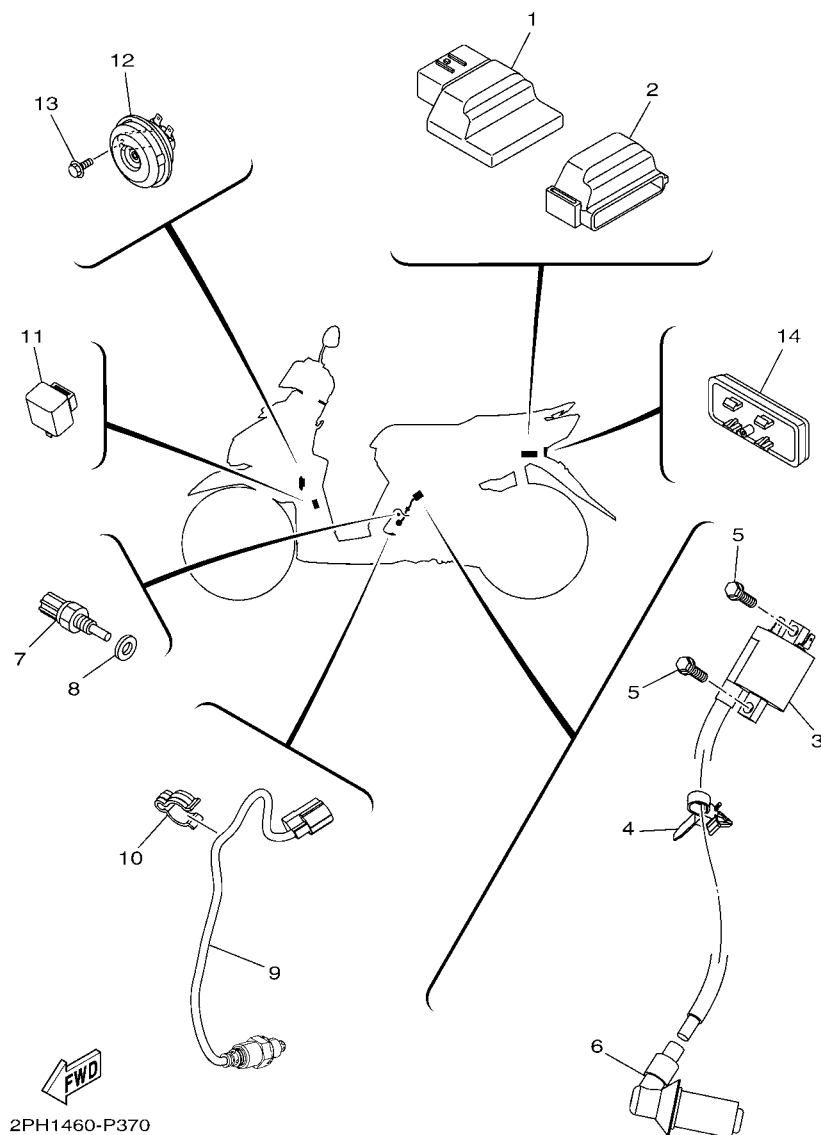


FIG. 37 ELECTRICAL 2

[illegible]

NUMERICAL INDEX

PART NO.	REF. NO.	PART NO.	REF. NO.	PART NO.	REF. NO.	PART NO.	REF. NO.	PART NO.	REF. NO.	PART NO.	REF. NO.
5LW-15659-01	10 - 6	2PH-E2658-00	5 - 2	2PH-E5373-00	9 - 7	2SX-E7653-00	12 - 4	2PH-F173F-00	16 - 23	4D0-F3346-00	18 - 18
36Y-2589H-00	27 - 8	2PH-E2659-00	5 - 6	2PH-E5407-00	10 - 16	2SX-E7660-00	12 - 11	2PH-F173F-10	16 - 23	54P-F334G-00	18 - 21
2PH-E1102-00	1 - 1	2PH-E2668-00	5 - 7	2PH-E5411-00	10 - 1	2DP-E7664-00	12 - 16	2PH-F173F-20	16 - 23	2PH-F3391-00-P0	29 - 1
2PH-E111F-00	4 - 4	2PH-E3300-00	6 - 1	2PH-E5413-00	10 - 19	2DP-E7668-00	12 - 21	2PH-F173F-30	16 - 23	2PH-F3391-00-P1	29 - 1
2BM-E111G-00	1 - 12	2BM-E3324-00	2 - 8	2PH-E5417-00	9 - 21	2SX-E7670-00	12 - 12	2PH-F173F-40	16 - 23	2PH-F3391-00-P2	29 - 1
2PH-E112F-00	4 - 5	54P-E3411-00	6 - 5	2PH-E5421-00	9 - 34	54P-E7674-00	12 - 5	2PH-F173F-50	16 - 23	2PH-F3391-00-P3	29 - 1
1DR-E1133-10	1 - 2	5LW-E3452-00	2 - 6	2PH-E5423-00	9 - 28	2DP-E7674-10	12 - 17	2PH-F173F-60	16 - 23	2PH-F3391-00-P4	29 - 1
2PH-E1165-00	1 - 8	2PH-E3475-00	6 - 2	2PH-E5451-00	10 - 2	2DP-E7678-00	12 - 22	2PH-F1741-00	16 - 15	2PH-F3391-00-P5	29 - 1
2PH-E1166-00	7 - 35	2PH-E3556-00	7 - 3	2PH-E5453-00	9 - 24	2DP-E7678-10	12 - 24	2PH-F174G-00	16 - 24	4FP-F3411-10	18 - 17
2PH-E1169-00	1 - 9	2PH-E3557-00	7 - 14	2PH-E5461-00	9 - 35	2SX-E7683-00	12 - 18	2PH-F174G-10	16 - 24	4RT-F3411-10	18 - 27
2BL-E1181-00	1 - 16	5LW-E3569-00	5 - 12	2PH-E5471-00	10 - 12	2SX-E7684-00	12 - 19	2PH-F174G-20	16 - 24	1KL-F3412-10	18 - 24
2PH-E1191-00	1 - 7	2PH-E3585-00	7 - 1	2PH-E5472-00	10 - 14	2PH-F1110-00	14 - 1	2PH-F174G-30	16 - 24	4RT-F3412-10	18 - 26
2BM-E1193-00	1 - 13	2PH-E3593-00	7 - 5	2PH-E5473-00	10 - 11	2PH-F1164-00	18 - 36	2PH-F174G-40	16 - 24	2PH-F3415-00	18 - 30
4YS-E1198-00	9 - 13	2PH-E3595-00	7 - 2	2PH-E5495-00	10 - 15	2PH-F1410-00	14 - 3	2PH-F174G-50	16 - 24	3AY-F3416-00	18 - 29
2PH-E119E-00	1 - 11	2PH-E3750-00	7 - 17	2BM-E5512-00	11 - 4	54P-F1459-00	14 - 5	2PH-F174G-60	16 - 24	1P6-F341E-10	18 - 28
2PH-E1311-00	1 - 20	2PH-E3761-00	7 - 9	2PH-E5520-00	11 - 1	2PH-F1511-00-P0	15 - 1	2PH-F174H-00	16 - 25	5VL-F341E-10	18 - 25
2PH-E1351-00	1 - 21	5LW-E3769-00	9 - 20	44D-E5521-00	11 - 5	2PH-F1511-00-P1	15 - 1	2PH-F174H-10	16 - 25	2PH-F4110-00	19 - 1
2PH-E1400-00	2 - 1	2PH-E3770-00	7 - 8	2PH-E5570-00	11 - 2	2PH-F1511-00-P2	15 - 1	2PH-F174H-20	16 - 25	2PH-F414A-00	19 - 11
2PH-E1422-00	2 - 5	2PH-E3907-00	19 - 5	44D-E5598-00	11 - 3	2PH-F1511-00-P3	15 - 1	2PH-F174H-30	16 - 25	54P-F414G-00	19 - 8
2PH-E1603-00	2 - 13	54P-E3915-00	19 - 6	2PH-E5601-00	11 - 6	2PH-F1511-00-P4	15 - 1	2PH-F174H-40	16 - 25	5D9-F414G-00	14 - 2
2PH-E1631-00	2 - 10	54P-E3938-00	7 - 12	2BL-E5620-00	11 - 12	2PH-F1511-00-P5	15 - 1	2PH-F174H-50	16 - 25	5D9-F414G-10	19 - 2
2PH-E1633-00	2 - 11	2PH-E3971-00	19 - 4	54P-E5630-00	11 - 14	2PH-F1552-00	29 - 14	2PH-F174H-60	16 - 25	54P-F4491-00	19 - 9
2PH-E1651-00	2 - 4	54P-E4137-00	7 - 13	5MX-E5657-00	12 - 33	2PH-F1611-00	15 - 3	2PH-F2141-00	14 - 7	4YY-F4610-00	19 - 12
2BM-E1681-00	2 - 2	2PH-E4146-00	7 - 18	5MX-E5673-00	11 - 15	2PH-F1621-00	15 - 5	54P-F2141-00	14 - 8	4YY-F4612-00	19 - 13
2PH-E2111-00	3 - 1	54P-E4147-00	7 - 10	2DP-E5744-00	12 - 23	2PH-F1711-00-P0	16 - 5	2PH-F2210-00	17 - 1	2PH-F4704-00	20 - 5
54P-E2113-00	3 - 4	5CA-E4147-00	7 - 11	2PH-E6111-00	13 - 9	2PH-F1711-00-P1	16 - 5	5MX-F2216-00	9 - 4	2PH-F470F-00	20 - 2
1KP-E2117-00	3 - 6	2PH-E4411-00	7 - 19	2PH-E6111-10	13 - 9	2PH-F1711-00-P2	16 - 5	2PH-F3100-00	18 - 1	5TL-F4727-00	20 - 11
54P-E2117-00	3 - 6	2PH-E4412-00	7 - 20	2DP-E6523-00	12 - 9	2PH-F1711-00-P3	16 - 5	44D-F3108-00	32 - 8	2PH-F472T-00	20 - 19
5TL-E2118-00	3 - 5	2PH-E4437-00	7 - 21	2SX-E6611-00	12 - 25	2PH-F1711-00-P4	16 - 5	5TL-F3108-00	29 - 31	2PH-F4730-00	20 - 1
54P-E2119-00	3 - 3	4ST-E443E-00	10 - 4	2SX-E6620-00	12 - 7	2PH-F1711-00-P5	16 - 5	54P-F3110-10	18 - 8	3C1-F4741-00	20 - 3
54P-E2121-00	3 - 2	5TL-E443E-00	7 - 28	2SX-E6626-00	12 - 8	2PH-F171A-00	16 - 3	1FC-F3111-10	18 - 19	5BP-F4741-00	20 - 4
2PH-E2126-00	3 - 7	5TP-E443G-00	7 - 25	54P-E6819-00	12 - 10	2PH-F171E-00	16 - 20	54P-F3126-10	18 - 5	1S7-F4768-00	20 - 14
2PH-E2146-00	3 - 11	2PH-E4450-00	7 - 22	2PH-E7211-00	13 - 4	2PH-F1721-00-P0	16 - 8	54P-F3136-10	18 - 2	2PH-F4773-00-P0	20 - 17
2PH-E2151-00	3 - 8	2PH-E4452-00	7 - 24	2PH-E7211-10	13 - 4	2PH-F1721-00-P1	16 - 8	2PH-F3141-00	18 - 15	2PH-F4773-00-P1	20 - 17
33S-E2159-01	3 - 10	2PH-E4453-00	7 - 23	2PH-E7410-00	13 - 1	2PH-F1721-00-P2	16 - 8	5LM-F3144-00	18 - 14	2PH-F4773-00-P2	20 - 17
33S-E2159-10	3 - 10	2PH-E4613-00	8 - 4	2PH-E7410-10	13 - 1	2PH-F1721-00-P3	16 - 8	3AY-F3145-00	18 - 3	40D-F4780-01	20 - 12
2PH-E2170-00	4 - 1	2PH-E4711-00	8 - 1	2PH-E7421-00	13 - 3	2PH-F1721-00-P4	16 - 8		18 - 6	2PH-F478E-00	20 - 15
2PH-E2176-00	4 - 8	2PH-E4718-00	8 - 2	2PH-E7421-10	13 - 3	2PH-F1721-00-P5	16 - 8	2JG-F3147-00	18 - 20	2PH-F478E-10	20 - 15
2BM-E2210-00	4 - 14	2PH-E5113-00	9 - 18	2SX-E7465-00	12 - 13	2PH-F172W-00	16 - 1	5NM-F3152-00	18 - 11	5TL-F5104-01	22 - 5
2PH-E2213-00	4 - 15	2PH-E5150-00	9 - 1	2SX-E7465-10	12 - 14	2PH-F1731-00	16 - 11	5P0-F3153-00	18 - 23	54P-F5111-00-35	22 - 1
54P-E2228-00	4 - 17	2PH-E5155-00	9 - 2	2SX-E7465-20	12 - 15	2PH-F1737-00	26 - 30	5P0-F3156-00	18 - 4	54P-F5168-00-33	21 - 1
54P-E2231-00	4 - 10	2PH-E5191-00	10 - 7	44D-E7611-00	12 - 6	2PH-F173E-00	16 - 22		18 - 7	3AY-F5181-01	21 - 8
44D-E2233-00	4 - 11	2PH-E5316-00	10 - 13	2SX-E7620-00	12 - 1	2PH-F173E-10	16 - 22	2JG-F3157-00	18 - 10		22 - 12
2PH-E2241-00	4 - 13	54P-E5351-00	6 - 4	2SX-E7623-00	12 - 3	2PH-F173E-20	16 - 22	2BU-F3158-00	18 - 12	2PH-F518A-00	23 - 4
2PH-E2611-00	5 - 10	2PH-E5362-00	9 - 19	2PH-E7632-10	12 - 2	2PH-F173E-30	16 - 22	4D0-F3165-00	18 - 22	54P-F518A-00	23 - 3
2PH-E2651-00	5 - 1	5LW-E5363-00	9 - 16	2PH-E7641-00	12 - 26	2PH-F173E-40	16 - 22	2PH-F3170-00	18 - 9	5TL-F5190-01	21 - 11
2PH-E2652-00	5 - 3	54P-E5371-00	9 - 6	2SX-E7644-00	12 - 20	2PH-F173E-50	16 - 22	278-F3181-50	18 - 13		22 - 15
2PH-E2653-00	5 - 4		10 - 3	2PH-E7645-00	12 - 31	2PH-F173E-60	16 - 22	2PH-F3340-00	18 - 16	28D-F5304-01	25 - 2

NUMERICAL INDEX

PART NO.	REF. NO.	PART NO.	REF. NO.	PART NO.	REF. NO.	PART NO.	REF. NO.	PART NO.	REF. NO.	PART NO.	REF. NO.
1LB-F530K-00	24 - 7	54P-F6282-00	26 - 28	2PH-F832L-10	29 - 32	5HV-H3311-00	34 - 3	90101-06046	25 - 18	90185-16800	24 - 15
	25 - 11	54P-F6290-00	26 - 15	2PH-F832L-20	29 - 32	5D9-H3350-00	37 - 11	90101-08847	28 - 13		25 - 19
5P0-F5311-00	25 - 1	2P2-F6290-11	26 - 15	2PH-F832L-30	29 - 32	2PH-H3371-00	37 - 12	90105-07801	4 - 7	90201-10065	17 - 5
2PH-F5311-00-35	25 - 1	2PH-F6301-00	26 - 16	2PH-F832L-40	29 - 32	2PH-H3509-00	32 - 5	90105-08861	17 - 2	90201-10118	27 - 3
54P-F5326-00	24 - 4	2PH-F6301-10	26 - 16	2PH-F832L-50	29 - 32	2PH-H3510-00	32 - 1	90105-10896	26 - 3	90201-10831	14 - 10
	25 - 8	54P-F6351-00	26 - 19	2PH-F832L-60	29 - 32	2PH-H3511-00	32 - 2	90109-06202	15 - 2		21 - 10
2PH-F5338-00-33	24 - 1	54P-F6351-20	26 - 19	2PH-F8345-00	29 - 17	4TE-H3517-00	32 - 4		15 - 4		22 - 14
5MX-F533A-00	24 - 12	2PH-F637G-00	26 - 20	2PH-F8346-00	29 - 23	2PH-H353F-00	32 - 3		20 - 6	90201-12028	17 - 4
	25 - 16	2PH-F7111-00	28 - 1	2PH-F8356-00	14 - 11	1LB-H3550-00	32 - 10	90109-06220	28 - 10	90201-12823	30 - 5
5MX-F5351-00	24 - 10	2PH-F7112-00	28 - 2	2PH-F835U-00-P0	29 - 21	54P-H3591-00	37 - 7	90109-06255	35 - 19	90201-154E8	11 - 9
	25 - 14	2PH-F7114-00	14 - 6	2PH-F835U-00-P1	29 - 21	5HH-H362Y-00	32 - 7	90109-06798	35 - 12	90201-15845	12 - 36
2PH-F5355-00	24 - 11	54P-F7121-00	9 - 3	2PH-F835U-00-P2	29 - 21	1LB-H3912-00	35 - 7	90109-068A3	29 - 7	90201-16810	24 - 16
	25 - 15	5LW-F7254-00	28 - 5	2PH-F835U-00-P3	29 - 21	5TL-H3922-00	35 - 18	90110-06846	7 - 16		25 - 20
2BM-F5802-00	23 - 6	2PH-F7267-00	28 - 6	2PH-F835U-00-P4	29 - 21	1LB-H3935-00	35 - 8	90110-06868	1 - 19	90201-16816	12 - 37
5YP-F5803-50	23 - 7	2PH-F7311-00	28 - 12	2PH-F835U-00-P5	29 - 21	5TL-H3955-20	35 - 2	90111-06051	29 - 11	90201-220J8	24 - 17
2BM-F5805-00	23 - 11	2PH-F7430-00	28 - 18	2PH-F835V-00-P0	29 - 27	40D-H3962-00	35 - 10	90111-06807	8 - 3		25 - 21
2PH-F580U-00	23 - 5	2PH-F7431-00	28 - 19	2PH-F835V-00-P1	29 - 27	1LB-H3967-00	35 - 9	90111-08815	23 - 2	90206-14093	24 - 13
54P-F582U-00	23 - 1	2PH-F7432-00	28 - 20	2PH-F835V-00-P2	29 - 27	40D-H396X-00	35 - 11	90116-08843	9 - 11		25 - 17
5P0-F583T-03	27 - 4	2PH-F7440-00	28 - 26	2PH-F835V-00-P3	29 - 27	1KP-H3973-00	35 - 1	90119-06155	19 - 3	90208-12808	12 - 34
5P0-F5852-00	27 - 7	2PH-F7441-00	28 - 27	2PH-F835V-00-P4	29 - 27	1KP-H3973-10	35 - 1	90149-05801	1 - 10	90249-12008	26 - 26
5P0-F5854-00	27 - 6	2PH-F7442-00	28 - 28	2PH-F835V-00-P5	29 - 27	1KP-H3976-00	35 - 5	90149-10805	23 - 15	90280-03017	2 - 9
5P0-F5855-00	27 - 10	2PH-F7481-00	28 - 7	2PH-F8373-00	29 - 10	1KP-H3976-10	35 - 5	90159-06810	16 - 21	90340-12808	9 - 12
5TL-F5867-01	27 - 9	54P-F8100-00	20 - 21	44D-F8379-00	29 - 19	1LB-H3980-00	35 - 14	90170-05803	3 - 9	90380-10800	12 - 28
2PH-F5872-00	27 - 1	2PH-F8257-00	29 - 9		29 - 25	54P-H3980-00	35 - 21	90170-12800	12 - 35	90380-15811	11 - 8
2PH-F5875-00	18 - 32	2PH-F8300-00	29 - 8	2PH-F8385-00	29 - 12	1LB-H411V-00	33 - 10	90170-12802	12 - 30	90387-05820	16 - 19
28D-F5876-00	18 - 34	2PH-F8311-00	29 - 4	2PH-H1410-00	30 - 2	1KP-H4127-00	33 - 8	90175-06013	26 - 25	90387-064W3	7 - 29
2BM-F5917-00	23 - 8	2PH-F831Y-00	29 - 33	2PH-H1450-00	30 - 1	2D5-H4147-00	33 - 4	90179-12004	30 - 6	90387-08815	22 - 10
2BM-F5919-00	23 - 13	2PH-F831Y-10	29 - 33	5TP-H1801-00	31 - 2	1KP-H4192-00	33 - 7	90179-25002	18 - 31		25 - 7
5YP-F5924-00	23 - 14	2PH-F831Y-20	29 - 33	5D9-H1828-00	31 - 4	2PH-H4300-00	33 - 1	90183-05807	15 - 6	90387-08820	28 - 14
5YP-F5925-01	23 - 12	2PH-F831Y-30	29 - 33	5D9-H1861-00	31 - 3	2PH-H430A-00	33 - 5		16 - 7	90387-10837	21 - 7
5YP-F5937-00	23 - 9	2PH-F831Y-40	29 - 33	54P-H1890-02	31 - 1	2PH-H4312-00	33 - 6		16 - 10		22 - 11
2PH-F6110-00	26 - 1	2PH-F831Y-50	29 - 33	2PH-H1940-00	36 - 14	54P-H4314-10	33 - 2		16 - 14	90388-10800	14 - 4
2PH-F6143-00-P0	26 - 5	2PH-F831Y-60	29 - 33	2BL-H1960-00	36 - 12	5TP-H454E-01	29 - 29		16 - 18	90388-10805	9 - 5
2PH-F6143-00-P1	26 - 5	2PH-F832B-00	29 - 34	14D-H2100-00	36 - 1	2PH-H4710-00	34 - 1		20 - 7	90401-10812	27 - 2
2PH-F6143-00-P2	26 - 5	2PH-F832B-10	29 - 34	14D-H2100-10	36 - 1	4AC-H4714-00	34 - 2		26 - 2	90430-06014	1 - 5
2PH-F6143-00-P3	26 - 5	2PH-F832B-20	29 - 34	2PH-H2115-00	36 - 2	2PH-H4721-00	34 - 5		26 - 6		9 - 15
2PH-F6143-00-P4	26 - 5	2PH-F832B-30	29 - 34	2PH-H2116-00	36 - 18	2PH-H4723-00	34 - 7		26 - 9	90430-10804	37 - 8
2PH-F6143-00-P5	26 - 5	2PH-F832B-40	29 - 34	2PH-H2129-00	20 - 8	2PH-H4733-00	34 - 4		28 - 9	90450-46803	7 - 33
2PH-F6143-00-P6	26 - 5	2PH-F832B-50	29 - 34	54P-H2151-00	36 - 3	2PH-H4735-00	34 - 6		29 - 2	90464-07805	36 - 17
2PH-F6145-00	26 - 8	2PH-F832B-60	29 - 34	1KP-H2176-00	20 - 20	2PH-H4753-00	34 - 10		29 - 5	90464-12810	36 - 10
2PH-F6240-00	26 - 11	2PH-F832C-00	29 - 35	2PH-H2310-00	37 - 3	54P-H5130-00	37 - 14		29 - 15		37 - 4
1DY-F6241-00	26 - 12	2PH-F832C-10	29 - 35	2PH-H2370-00	37 - 6	2PH-H5546-00	37 - 2		29 - 18	90464-16006	36 - 11
2PH-F6246-00	26 - 13	2PH-F832C-20	29 - 35	2PH-H252E-00	36 - 5	2PH-H5752-00	19 - 7		29 - 24	90464-16807	37 - 10
2PH-F6257-00	26 - 21	2PH-F832C-30	29 - 35	1LB-H2556-00	35 - 15	2PH-H591A-00	37 - 1		33 - 9	90467-110A3	10 - 5
	28 - 17	2PH-F832C-40	29 - 35	1LB-H2566-00	36 - 15	2DP-H592A-00	37 - 9		34 - 9	90467-11825	9 - 8
54P-F6280-00	26 - 14	2PH-F832C-50	29 - 35	2PH-H2590-00	36 - 8	5P0-W0041-00	27 - 5	90185-10011	26 - 4	90467-12807	7 - 26
2P2-F6280-11	26 - 14	2PH-F832C-60	29 - 35	1LB-H2911-00	35 - 6	4C9-W0048-00	23 - 10	90185-10012	21 - 9	90467-13808	7 - 36
54P-F6281-01	26 - 27	2PH-F832L-00	29 - 32	5HV-H3311-00	33 - 3	90101-06046	24 - 14		22 - 13	90467-13858	7 - 37

NUMERICAL INDEX

PART NO.	REF. NO.	PART NO.	REF. NO.	PART NO.	REF. NO.	PART NO.	REF. NO.	PART NO.	REF. NO.	PART NO.	REF. NO.
90480-13013	7 - 30	93102-32801	13 - 6	95022-06020	9 - 27	97702-50014	29 - 20				
90501-12743	28 - 21	93106-20816	21 - 3		10 - 21		29 - 26				
	28 - 29		22 - 3		37 - 5		29 - 30				
90501-16003	26 - 24	93210-07802	24 - 6	95022-06025	9 - 32		33 - 11				
90501-16004	6 - 6		25 - 10		36 - 13	97702-60530	5 - 9				
90506-12001	24 - 8	93210-09806	4 - 2	95022-06035	9 - 33	97707-50012	20 - 10				
	25 - 12	93210-148H8	9 - 17		9 - 37	97707-50016	16 - 2				
90506-15001	24 - 9	93210-16805	12 - 32		10 - 10		16 - 6				
	25 - 13	93210-29800	6 - 7	95022-06040	26 - 22		16 - 9				
90506-20514	28 - 16	93210-29803	31 - 6	95022-06045	10 - 20		16 - 13				
90506-35821	28 - 4	93210-35895	7 - 4	95022-06060	9 - 10		16 - 17				
90508-32768	11 - 7	93211-07800	9 - 23	95022-06070	9 - 26		26 - 7				
90520-03806	20 - 9	93211-47801	9 - 30	95302-08600	1 - 14		26 - 10				
90520-05819	5 - 5	93306-001X9	4 - 3	95302-10600	17 - 3		28 - 11				
90520-08004	28 - 8	93306-201YK	13 - 10	9530N-03600	32 - 6		29 - 6				
90520-08809	14 - 13	93306-204XT	13 - 11	95602-06100	35 - 13		29 - 13				
90520-10811	7 - 31	93306-252YB	12 - 27		35 - 20		29 - 16				
90520-10825	7 - 32	93306-272YA	13 - 5	95602-08200	28 - 15		29 - 22				
90560-10292	21 - 2	93306-300YF	21 - 4	95602-10200	14 - 9		29 - 28				
	22 - 2		22 - 4	95612-08618	1 - 6		32 - 9				
91312-05010	19 - 10	93306-303YN	13 - 8	95702-08500	8 - 5		35 - 4				
91312-06012	4 - 6	93306-351Y5	13 - 2	95702-10500	24 - 5	97707-50025	7 - 27				
	4 - 12	93306-372X5	2 - 7		25 - 9	98502-05010	35 - 16				
91312-06014	36 - 7	93310-528Y8	2 - 3	95802-06010	14 - 12	98502-05020	6 - 3				
91312-06020	30 - 3	93440-10153	1 - 3		18 - 33	98502-05025	26 - 29				
	30 - 4	93450-14088	2 - 12		18 - 35	98507-05010	20 - 16				
	31 - 5	93501-04830	28 - 22		18 - 37	99002-09600	28 - 3				
	35 - 17		28 - 30		37 - 13	99009-15400	11 - 10				
91312-06025	11 - 13	94107-14802	21 - 5	95802-08030	28 - 25	99009-25400	13 - 7				
	27 - 11		22 - 6		28 - 33	99009-35700	12 - 29				
91401-25015	28 - 24	94108-14802	24 - 2	95812-06016	5 - 11	99480-05010	9 - 25				
	28 - 32		25 - 3	95812-06025	7 - 15						
91701-08035	28 - 23	94207-14802	21 - 6		7 - 34						
	28 - 31		22 - 7	95812-06035	7 - 6						
91810-14809	1 - 17	94208-14802	24 - 3	95812-06040	9 - 14						
	1 - 18		25 - 4	95812-06045	7 - 7						
	9 - 9	94307-14802	22 - 8	95812-08055	8 - 6						
	9 - 31		25 - 5	95822-06020	5 - 8						
	9 - 36	94414-14801	22 - 9		10 - 17						
	10 - 9	94416-14801	25 - 6		20 - 18						
92012-05008	36 - 4	94568-A6092	4 - 9	95822-06090	10 - 18						
92012-05010	26 - 18	94700-00880	1 - 15	97602-05208	36 - 6						
92012-05016	26 - 17	95022-06010	1 - 4	97602-05216	35 - 3						
	36 - 16		10 - 8	97702-40616	34 - 8						
93102-15801	11 - 11		20 - 13	97702-50014	16 - 4						
93102-19814	9 - 22	95022-06012	36 - 9		16 - 12						
93102-20815	13 - 12	95022-06014	26 - 23		16 - 16						
93102-25816	9 - 29	95022-06020	4 - 16		29 - 3						